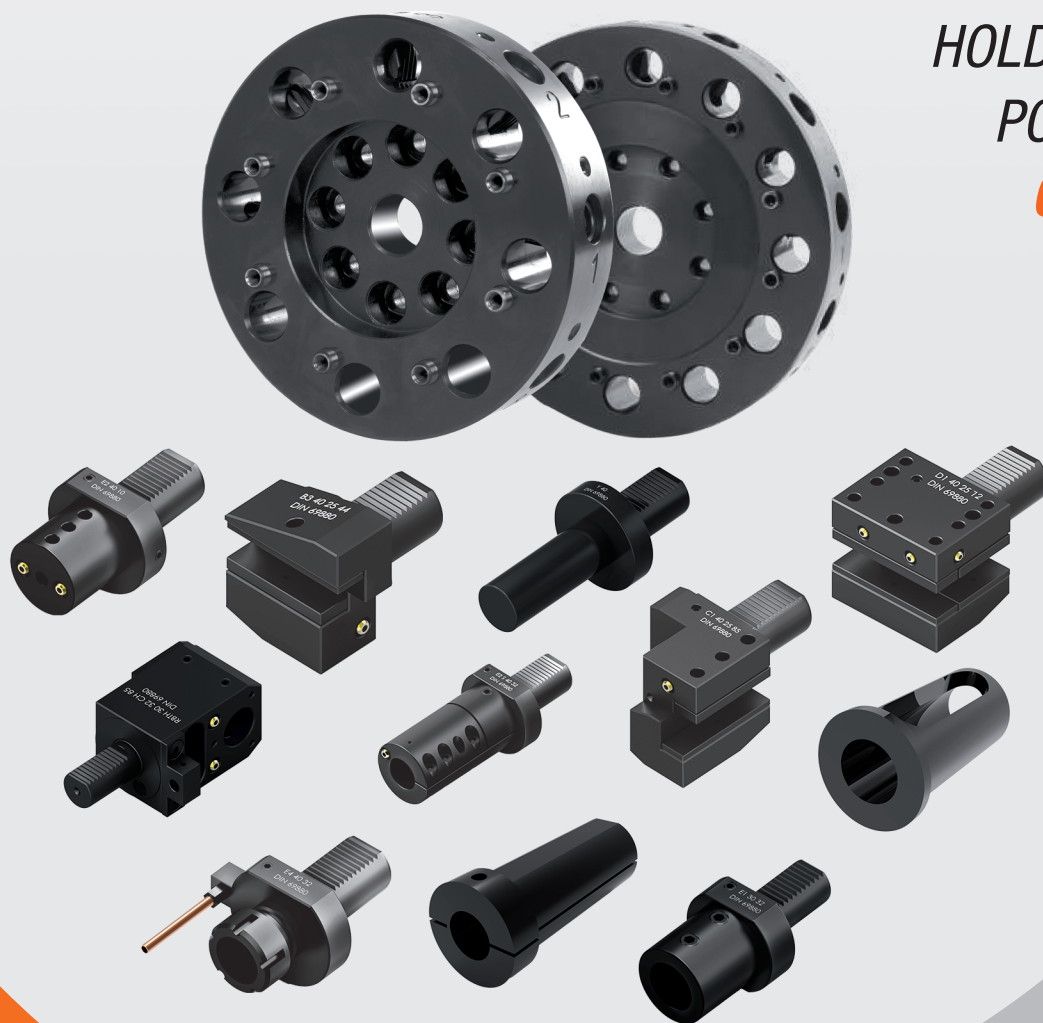




**PROMINENT**<sup>TM</sup>  
SOLUTIONS WITH INNOVATION

HOLDING THE  
POWER TO  
**CHANGE**



[www.prominenttools.com](http://www.prominenttools.com)

**VDI TOOL DISC & TOOL HOLDERS**  
FOR CNC TURNING & TURNMILL CENTERS



Dear Customer

It is indeed our pleasure to present our comprehensive new catalogue to you.

We have endeavoured and developed a user friendly catalogue, which you may find very helpful. Quality is the essence of our business, & is all pervasive in our manufacturing operations. You may observe same quality pursuit, in this latest catalogue of ours also.

Our new introductions BMT Tool Holders, VDI Tool holders DIN 69880 through coolant reduction sleeves & slit sleeves fill an important need, for more, high speed machining applications, especially in the field of aerospace industry.

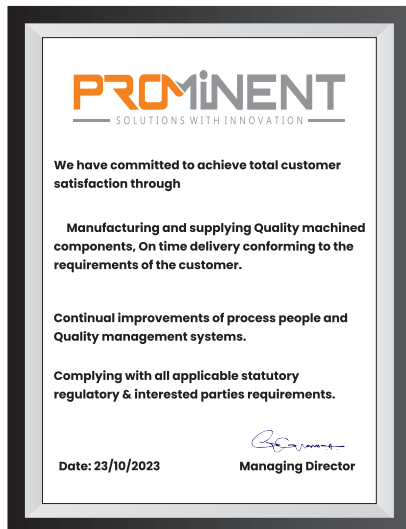
Our customer friendly, expert application engineers, with their available for you, if required, for developing appropriate cost effective tool holding solution, we are always at your services, for any special requirements of yours too. Which is our specialty and well recognized by discerning customers.

Your valued suggestions are always welcome.

STARTED  
**2021**

**20**  
EXPERIENCE

COMMITTED  
TO MEET  
AND EXCEED  
CUSTOMER  
EXPECTATIONS  
— IN —  
QUALITY  
DELIVERY  
C O S T



We are proud to announce that we are an ISO 9001:2015 Company re certified by TUV INDIA



Our Commitment to Greater & Consistent Quality is the Driving Force Behind Our Quest for Customer Satisfaction

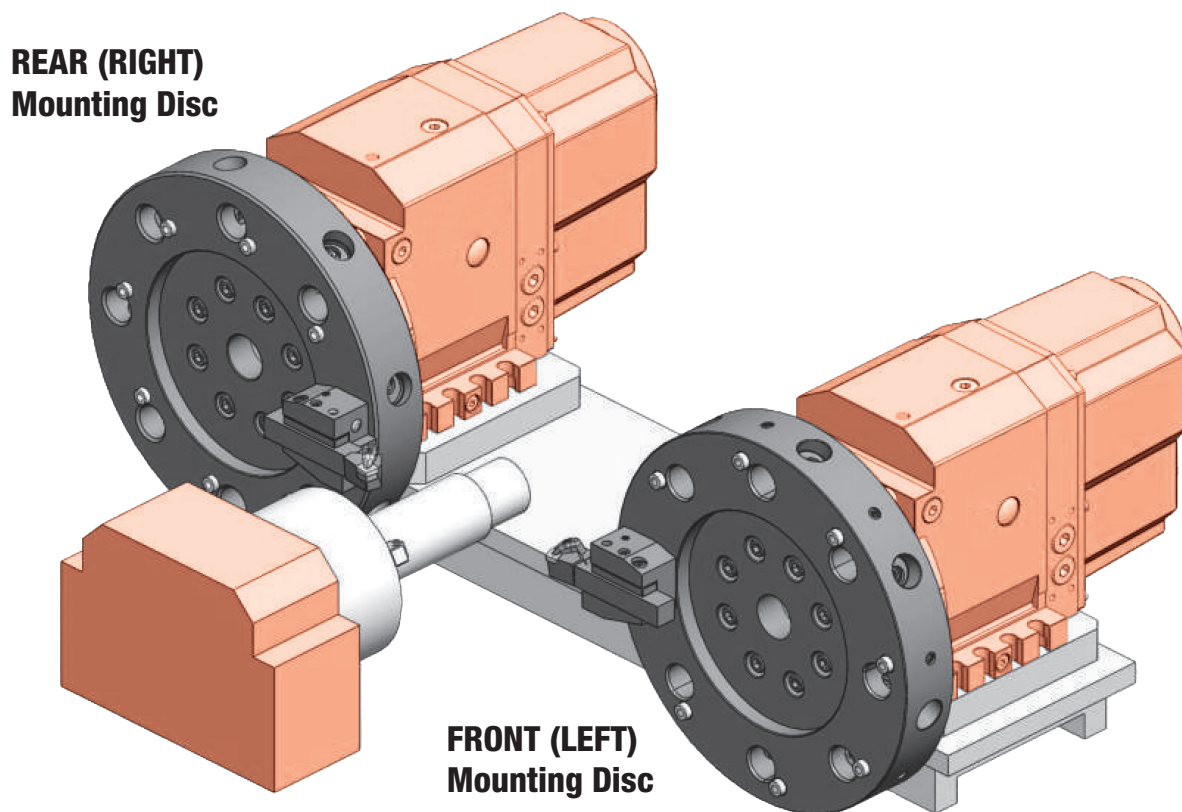




## TOOL DISCS FEATURES

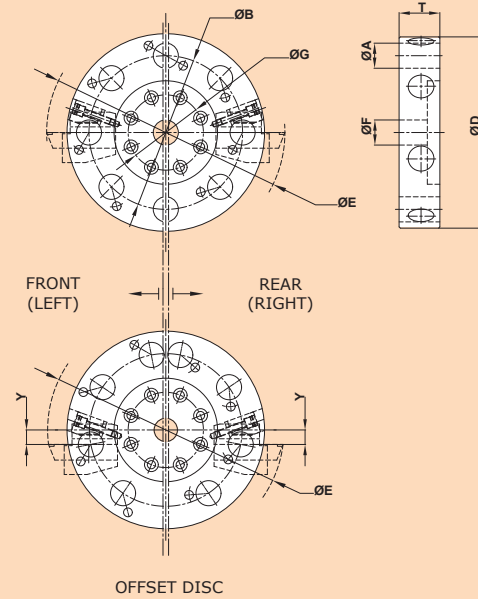
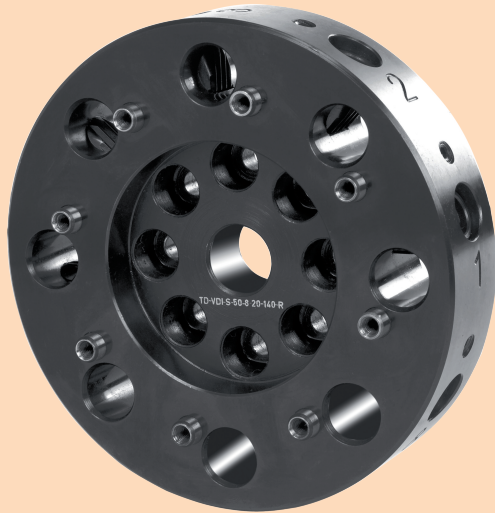
- Available in 8 & 12 Station as our standard.
- Made out of Forged, Medium Carbon Steel & Toughened to 20±2 HRC.
- Finish machining on precision machining centers to ensure accuracies.
- Suitable for fitment on both flat and slant bed CNC lathes.
- Available in Right version (Rear Mounting) & Left version (Front Mounting).
- Suitable for fitment on Pragati, Diplomatic, Sauter & Baruffaldi turrets.
- Customized design can be supplied upon request.

## TOOL DISC MOUNTING POSITION





## VDI TOOL DISCS AXIAL - STATIC TOOLS - 8 STATION



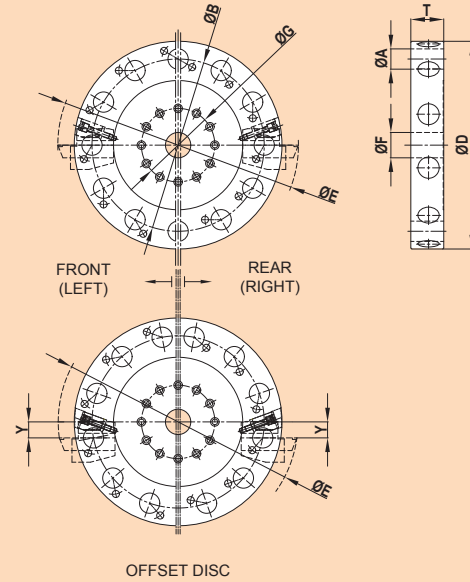
TURRET TYPE	ØA (VDI)	ØB	T	ØD	ØE	ØF	ØG	Y	ORDER CODE
DUPLOMATIC-BSV-N-100, BARUFFALDI-TOE100, SAUTER 0.5-480-510, PRAGATI BTP-50,	16	160	34	200	230	25	70	-	TDVDIS50816160
	20	140	42	185	235	25	70	-	TDVDIS50820140
	20	200	42	245	294	30	90	-	TDVDIS63820200
	20	200	42	245	292	30	90	17	TDVDIS6382020017
DUPLOMATIC-BSV-N-120, BARUFFALDI-TOE120, SAUTER 0.5-480-512, PRAGATI BTP-63,	20	209	42	264	303	30	90	12	TDVDIS6382020912
	20	240	42	295	332	30	90	-	TDVDIS63820240
	20	240	42	295	331	30	90	17	TDVDIS6382024017
	30	190	57	250	300	30	90	-	TDVDIS63830190
	30	200	57	260	310	30	90	-	TDVDIS63830200
	30	200	57	260	308	30	90	15	TDVDIS6383020015
	30	220	57	270	330	30	90	-	TDVDIS63830220
	30	220	57	270	330	30	90	-	TDVDIS63830220
DUPLOMATIC-BSV-N-160, BARUFFALDI-TOE160, SAUTER 0.5-480-516, PRAGATI BTP-80,	30	210	57	270	310	40	120	-	TDVDIS80830210
	30	210	57	285	308	40	120	25	TDVDIS8083021025
	30	270	57	310	350	40	120	-	TDVDIS80830240
	30	240	57	310	348	40	120	25	TDVDIS8083024025
	30	270	57	340	380	40	120	-	TDVDIS80830270
	30	270	57	340	378	40	120	25	TDVDIS8083027025
	40	245	65	310	380	40	120	-	TDVDIS80840245
	40	245	65	320	378	40	120	25	TDVDIS8084024525
DUPLOMATIC-BSV-N-200, BARUFFALDI-TOE200, SAUTER 08-480-520, PRAGATI BTP-100,	40	272	65	340	407	50	145	-	TDVDIS100840272
	40	272	65	340	405	50	145	32	TDVDIS10084027232
	40	275	65	345	408	50	145	25	TDVDIS10084027525
	40	290	65	370	425	50	145	-	TDVDIS100840290
	40	290	65	370	425	50	145	32	TDVDIS10084029032
	40	340	65	410	475	50	145	-	TDVDIS100840340
	40	340	65	410	473	50	145	32	TDVDIS10084034032
DUPLOMATIC-BSV-N-250, BARUFFALDI-TOE250, SAUTER 0.5-480-520, PRAGATI BTP-125,	50	340	80	420	495	63	182	-	TDVDIS125850340
	50	340	80	430	492	63	182	35	TDVDIS12585034035
	50	400	80	480	564	63	182	-	TDVDIS125850400
	50	400	80	480	561	63	182	35	TDVDIS12585040035
DUPLOMATIC-BSV-N-320, BARUFFALDI-TOE320, SAUTER 0.5480-532, PRAGATI BTP-160,	60	460	96	560	649	80	220	-	TDVDIS160860460







**VDI TOOL DISCS AXIAL - STATIC TOOLS - 12 STATION**

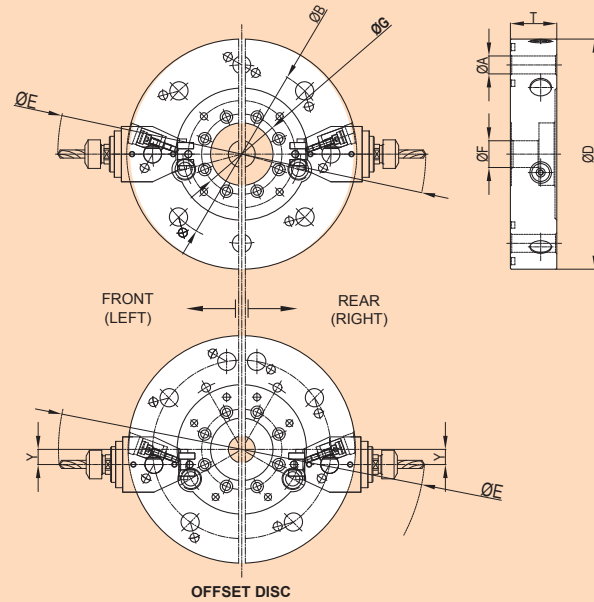


TURRET TYPE	ØA (VDI)	ØB	T	ØD	ØE	ØF	ØG	Y	ORDER CODE
DUPLOMATIC-BSV-N100 BARUFFALDI-TOE100, SAUTER 0.5-480-510, PRAGATI BTP-50	16	160	34	200	230	25	70	-	TDVDIS501216160
DUPLOMATIC -BSV-N-120, BARUFFALDI-TOE120, SAUTER-0.5-480-512, PRAGATI BTP-63,	20	200	42	250	292	30	90	-	TDVDIS631220200
	20	200	42	250	290	30	90	17	TDVDI63122020017
	20	209	42	264	301	31	90	12	TDVDIS63122020912
	20	240	42	295	332	30	90	-	TDVDI631220240
	20	240	42	295	330	30	90	17	TDVDIS63122024017
DUPLOMATIC -BSV-N-160, BARUFFALDI-TOE160, SAUTER-0.5-480-516, PRAGATI BTP-80,	30	290	45	345	382	40	120	-	TDVDIS801220290
	30	270	57	340	380	40	120	-	TDVDIS801230270
	30	270	57	340	378	40	120	25	TDVDIS80123027025
	30	315	57	380	425	40	120	-	TDVDIS801230315
DUPLOMATIC -BSV-N-200, BARUFFALDI-TOE200, SAUTER-0.5-480-520, PRAGATI BTP-100,	30	340	57	400	450	50	145	-	TDVDIS1001230340
	30	370	57	430	480	50	145	-	TDVSIS1001230370
	40	340	65	410	475	50	145	-	TDVDIS1001240340
	40	340	65	410	472	50	145	32	TDVDIS100124034032
	40	340	65	410	471	70	145	55	TDVDIS100124034055
DUPLOMATIC -BSV-N-250, BARUFFALDI-TOE250, SAUTER-0.5-480-520, PRAGATI BTP-125,	40	370	65	440	505	50	145	-	TDVDIS1001240370
	50	400	80	480	564	63	182	-	TDVDIS1251250400
DUPLOMATIC -BSV-N-320, BARUFFALDI-TOE320, SAUTER-0.5-480-532, PRAGATI BTP-160,	50	400	80	480	461	63	182	35	TDVDIS125125040035
	60	460	96	560	649	80	220	-	TDVDIS1601260460
	60	460	96	560	645	80	220	40	TDVDIS160126046040





**VDI TOOL DISCS - AXIAL - DRIVEN TOOLS AS PER DIN 5480/5482 8-STATION**



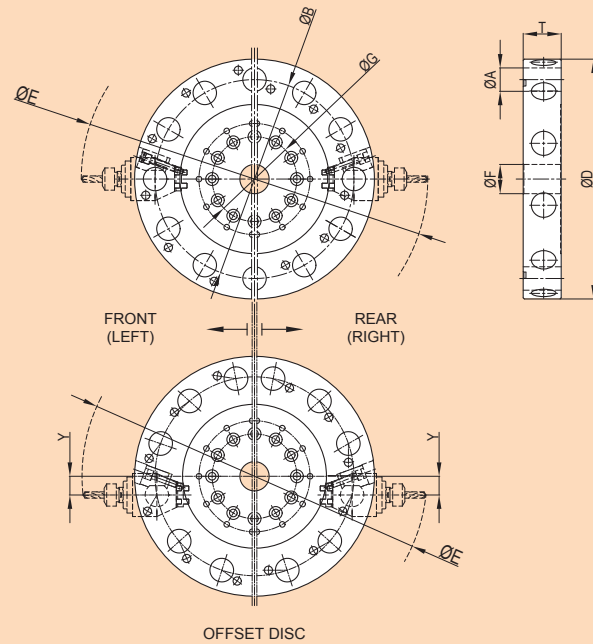
DIN 5480 TURRET TYPE	ØA (VDI)	ØB	T	ØD	ØE	ØF	ØG	Y	ITEM NAME
PRAGATI DTT63-8-200-0	20	240	52	258	390	30	90	-	TDVDIR63820200D80
PRAGATI DTT63-8-240-0	20	240	52	310	430	30	90	-	TDVDIR63820240D80
PRAGATI DTT 80-8-240-0	30	240	67	310	537	40	120	-	TDVDIR80830240D80
PRAGATI DTT 80-8-270-0	30	270	67	340	567	40	120	-	TDVDIR80830270D80
PRAGATI DTT 80-8-270-0	40	270	76	340	610	40	120	-	TDVDIR80840270D80
PRAGATI DTT 100-8-340-0	40	340	76	410	680	50	145	-	TDVDIR100840340D80
PRAGATI DTT 100-8-340-32	40	340	76	410	677	50	145	32	TDVDIR10084034032D80

DIN 5482 TURRET TYPE	ØA (VDI)	ØB	T	ØD	ØE	ØF	ØG	Y	ITEM NAME
PRAGATI DTT80-8-240-0	30	240	56	310	537	40	120	-	TDVDIR80830240D82
PRAGATI DTT80-8-270-0	30	270	56	340	567	40	120	-	TDVDIR80830270D82
PRAGATI DTT80-8-270-0	40	270	64	340	610	40	120	-	TDVDIR80840270D82
PRAGATI DTT 100-8-340-0	40	340	65	410	475	50	145	-	TDVDIR100840340D82
PRAGATI DTT 100-8-340-32	40	340	65	410	475	50	145	32	TDVDIR10084034032D82





**VDI TOOL DISCS - AXIAL - DRIVEN TOOLS AS PER DIN 5480/5482 12-STATION**

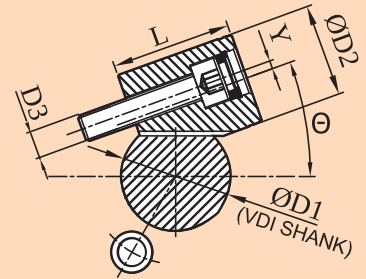
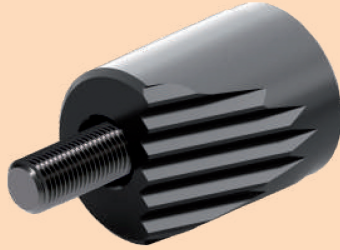


DIN 5480 TURRET TYPE	ØA (VDI)	ØB	T	ØD	ØE	ØF	ØG	Y	CODE
PRAGATI DTT 63-12-240-0	20	240	52	310	430	30	90	-	TDVDIR631220240D80
PRAGATI DTT 80-12-270-0	20	270	52	340	460	40	120	-	TDVDIR801220270D80
PRAGATI DTT80-12-270-0	30	270	67	340	567	40	120	-	TDVDIR801230270D80
PRAGATI DTT80-12-270-25	30	270	67	340	564	40	120	25	TDVDIR80123027025D80
PRAGATI DTT80-12-300-0	30	300	67	370	597	40	120	-	TDVDIR801230300D80
PRAGATI DTT 100-12-340-0	40	340	76	410	680	50	145	-	TDVDIR1001240340D80
PRAGATI DTT 100-12-340-32	40	340	76	410	677	50	145	32	TDVDIR100124034032D80
PRAGATI DTT 100-12-370-0	40	370	76	440	710	50	145	-	TDVDIR1001240370D80

DIN 5482 TURRET TYPE	ØA (VDI)	ØB	T	ØD	ØE	ØF	ØG	Y	CODE
PRAGATI DTT80-12-270-0	30	270	56	340	567	40	120	-	TDVDIR801230270D82
PRAGATI DTT80-12-270-25	30	270	56	340	564	40	120	25	TDVDIR80123027025D82
PRAGATI DTT 100-12-340-0	40	340	64	410	680	50	145	-	TDVDIR1001240340D82
PRAGATI DTT 100-12-340-32	40	340	64	410	680	50	145	32	TDVDIR100124034032D82
PRAGATI DTT 100-12-370-0	40	370	64	440	710	50	145	-	TDVDIR1001240370D82

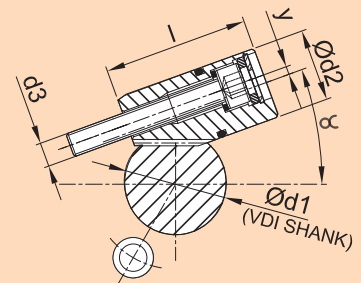


### VDI ECCENTRIC CLAMPS (VEC) FOR STATIC TOOL DISCS LOCKING CLAMPS



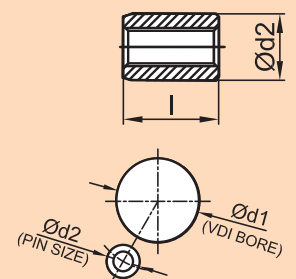
ORDER CODE	ITEM NAME	ØD1(VDI SHANK)	ØD2	L	Y	D3	Ø
VEC20	PVEC 20	16/20/25	20	25	2	M6	20°
VEC22	PVEC 22	30	22	34	2	M8	20°
VEC26	PVEC 26	30	26	32	3	M8	20°
VEC28	PVEC 28	40	28	42	3	M10	20°
VEC30	PVEC 30	40	30	42	3	M10	20°
VEC34	PVEC 34	40	34	44	3	M10	20°
VEC44	PVEC 44	50/60	44	50	3	M12	25°

### VDI ECCENTRIC CLAMPS WITH O-RINGS (VECWO) FROM DRIVEN TOOL DISCS LOCKING CLAMPS



ARTICLE NO	ITEM NAME	ØD1(VDI SHANK)	ØD2	L	Y	D3	Ø
VECWO18	PVECWO 18	20/25	18	25	2	M6	20°
VECWO22	PVECWO 22	30	22	34	2	M8	20°
VECWO26	PVECWO 26	40	26	37	3	M8	20°
VECWO28	PVECWO 28	40	28	40	3	M10	20°

### ORIENTAION PINS (OP)



ORDER CODE	ITEM NAME	ØD1 (VDI BORE)	ØD2	L
OP818	POP 8×18	16	8	18
OP1022	POP 10×22	20	9.99	22
OP1015	POP 10×15	25	9.99	15
OP1420	POP 14×20	30/40	13.94	20
OP1622	POP 16×22	50/60	15.9	22

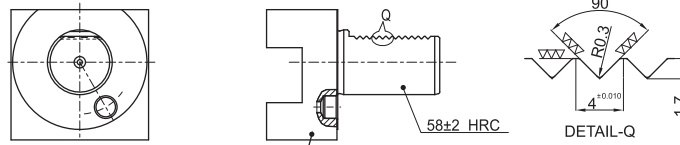






## VDI TECHNOLOGY

The VDI system is a quick change clamping systems for each tool holder within the tool disc. Tool changes can therefore be performed within seconds, rather than minutes as with the traditional block system



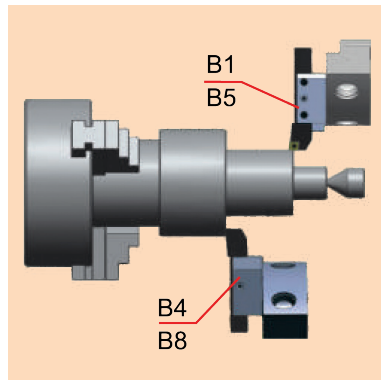
20±2 HRC (TOUGHENED STEEL) for form A,B,C,D,E1,E2 & Z varieties.  
58±2 HRC (CASE HARDENED STEEL) for form E4 & F varieties.

## FEATURES

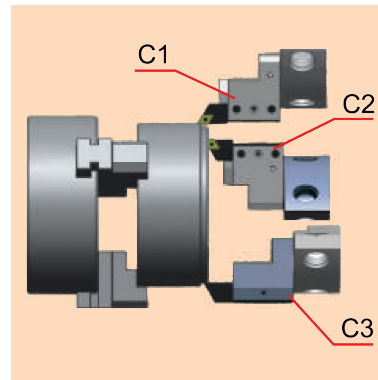
- 1) VDI tool holders are made as per DIN 69880.
- 2) Tool holders are made by toughened steel C-45 as well as case hardened steel 20MnCr5.
- 3) Our standard supply will be in toughened steel C-45 for form A, B, C, D, E1, E2 & Z varieties.
- 4) Case hardened steel 20MnCr5 for form E4 & F varieties.
- 5) Our standard tool holders are fully blackened.
- 6) Shank white, teeth white, tool holder seating surface white will be given on request.
- 7) The tool holder shank portion are heat treated to 58±2 HRC, and the teeth are ground.

## SELECTION OF VDI TOOL HOLDERS

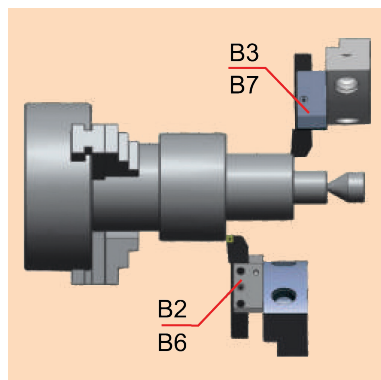
Spindle Rotation clockwise  
application of OD Turn and Face



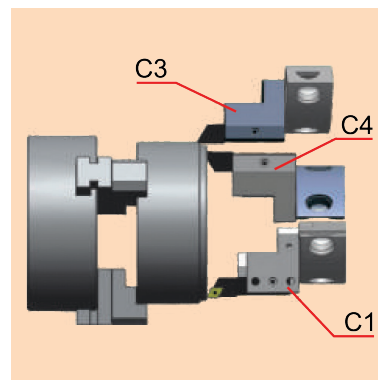
Spindle Rotation clockwise  
application of Face and ID Bore



Spindle Rotation Anticlockwise  
application of OD Turn and Face

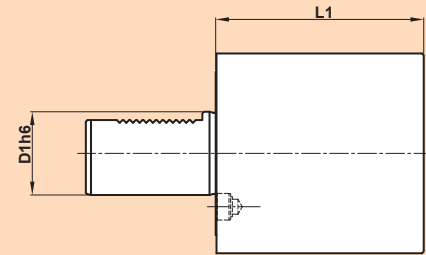
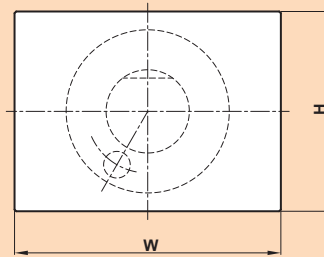


Spindle Rotation Anticlockwise  
application of Face and ID Bore



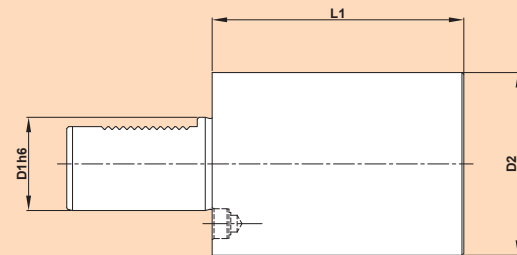
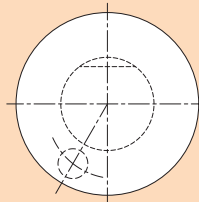


## PRE MACHINED BLANKS FORM A1



ORDER CODE	ITEM NAME	D1	L1	W	H
A11644	PA1 16X44	16	44	78	44
A12065	PA1 20X65	20	65	100	60
A12575	PA1 20X75	25	75	100	60
A13085	PA1 30X85	30	85	130	76
A140100	PA1 40X100	40	100	151	96
A150125	PA1 50X125	50	125	160	120
A160160	PA1 60X160	60	160	165	125

## PRE MACHINED BLANKS FORM A2

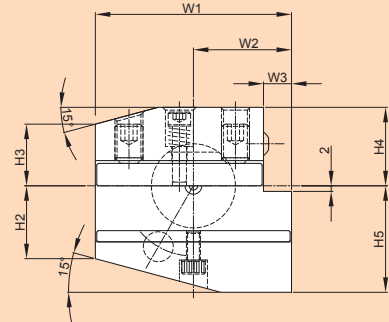
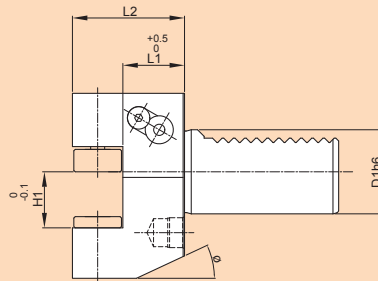


ORDER CODE	ITEM NAME	D1	D2	L1
A21660	PA2 16X60	16	40	60
A22070	PA2 20X70	20	50	70
A22580	PA2 25X80	25	58	80
A230100	PA2 30X100	30	68	100
A240120	PA2 40X120	40	83	120
A250135	PA2 50X135	50	98	135
A260150	PA2 60X150	60	123	150



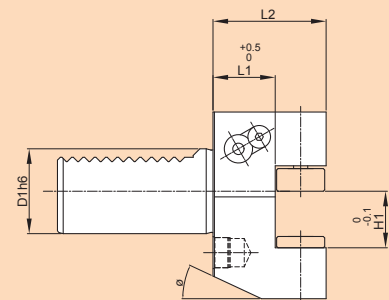
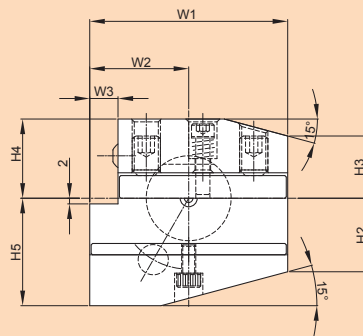
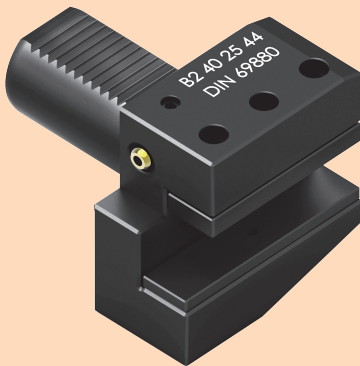


### RIGHT HAND SHORT-RADIAL FORM B1



ORDER CODE	ITEM NAME	D1	W1	W2	W3	H1	H2	H3	H4	H5	H6	L1	L2	Ø
B1161224	PB1 16 12 24	16	42	23	5	12	15	15	20	22	19	13	24	30°
B1201630	PB1 20 16 30	20	55	30	7	16/12	19	19	25	30	23	16	30	30°
B1251630	PB1 25 16 30	25	55	30	7	16/12	22.5	22.5	25	30	25	16	30	30°
B1302040	PB1 30 20 40	30	70	35	10	20/16	26	22	28	38	30	22	40	25°
B1402544	PB1 40 25 44	40	85	42.5	12.5	25/20	35	30	32.5	48	-	22	44	-
B1503255	PB1 50 32 55	50	100	50	16	32/25	42	35	35	60	-	30	55	-
B1603260	PB1 60 32 60	60	125	62.5	16	32/25	46	42.5	42.5	62.5	-	30	60	-

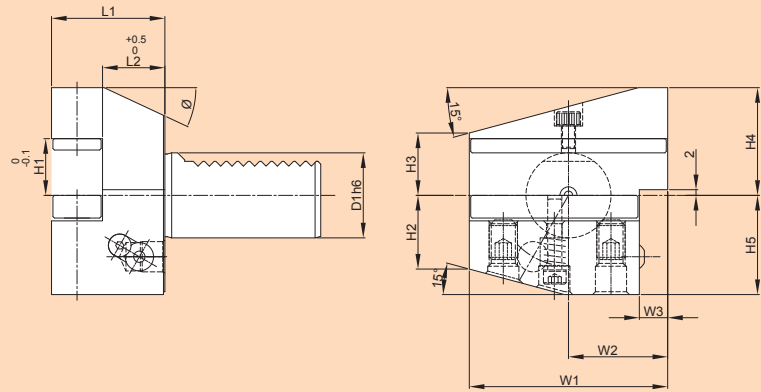
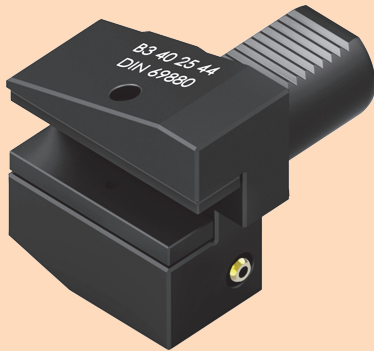
### LEFT HAND SHORT-RADIAL FORM B2



ORDER CODE	ITEM NAME	D1	W1	W2	W3	H1	H2	H3	H4	H5	H6	L1	L2	Ø
B2161224	PB2 16 12 24	16	42	23	5	12	15	15	20	22	19	13	24	30°
B2201630	PB2 20 16 30	20	55	30	7	16/12	19	19	25	30	23	16	30	30°
B2251630	PB2 25 16 30	25	55	30	7	16/12	22.5	22.5	25	30	25	16	30	30°
B2302040	PB2 30 20 40	30	70	35	10	20/16	26	22	28	38	30	22	40	25°
B2402544	PB2 40 25 44	40	85	42.5	12.5	25/20	35	30	32.5	48	-	22	44	-
B2503255	PB2 50 32 55	50	100	50	16	32/25	42	35	35	60	-	30	55	-
B2603260	PB2 60 32 60	60	125	62.5	16	32/25	46	42.5	42.5	62.5	-	30	60	-

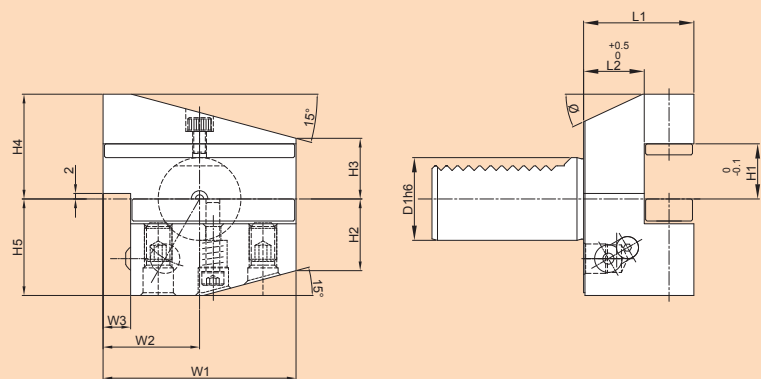


### RIGHT HAND SHORT OVER HEAD-RADIAL FORM B3



ORDER CODE	ITEM NAME	D1	W1	W2	W3	H1	H2	H3	H4	H5	H6	L1	L2	θ
B3161224	PB3 16 12 24	16	42	23	5	12	15	15	22	20	19	13	24	30°
B3201630	PB3 20 16 30	20	55	30	7	16/12	19	19	30	25	23	16	30	30°
B3251630	PB3 25 16 30	25	55	30	7	16/12	22.5	22.5	30	25	25	16	30	30°
B3302040	PB3 30 20 40	30	70	35	10	20/16	26	22	38	35	28	22	40	25°
B3402544	PB3 40 25 44	40	85	42.5	12.5	25/20	35	30	48	42.5	-	22	44	-
B34503255	PB3 50 32 55	50	100	50	16	32/25	42	35	60	50	-	30	55	-
B3603260	PB3 60 32 60	60	125	62.5	16	32/25	46	42.5	62.5	62.5	-	30	-	-

### LEFT HAND SHORT OVER HEAD-RADIAL FORM B4



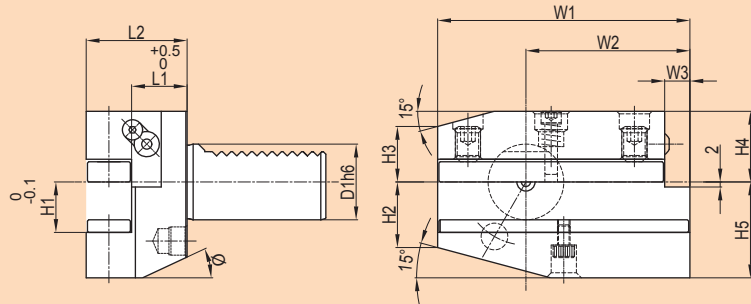
ORDER CODE	ITEM NAME	D1	W1	W2	W3	H1	H2	H3	H4	H5	H6	L1	L2	θ
B4161224	PB4 16 12 24	16	42	23	5	12	15	15	22	20	19	13	24	30°
B4201630	PB4 20 16 30	20	55	30	7	16/12	22.5	22.5	30	25	23	16	30	30°
B4251630	PB4 25 16 30	25	55	30	7	16/12	22.5	22.5	30	25	25	16	30	30°
B4302040	PB4 30 20 40	30	70	35	10	20/16	26	22	38	35	28	22	40	25°
B4402544	PB4 40 25 44	40	85	42.5	12.5	25/20	35	30	48	42.5	-	22	44	-
B4503255	PB4 50 32 55	50	100	50	16	32/25	42	35	60	50	-	30	55	-
B4603260	PB4 60 32 60	60	125	62.5	16	32/25	46	42.5	62.5	62.5	-	30	60	-





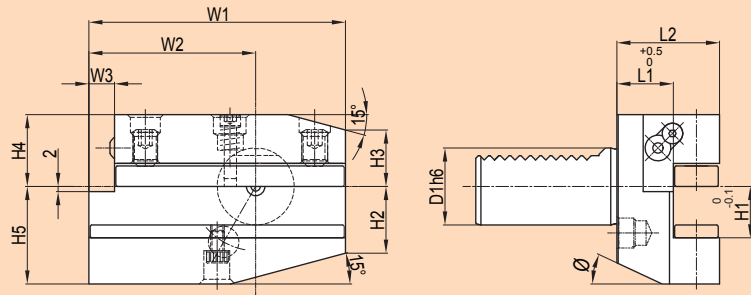


### RIGHT HAND LONG-RADIAL FORM B5



ORDER CODE	ITEM NAME	D1	W1	W2	W3	H1	H2	H3	H4	H5	H6	L1	L2	Ø
B5161224	PB5 16 12 24	16	58	39	5	12	15	15	20	22	19	13	24	30°
B5161224	PB5 16 12 24	20	75	50	7	16/12	19	19	25	30	23	16	30	30°
B5251630	PB5 25 16 30	25	75	50	7	16/12	22.5	22.5	25	30	25	16	30	30°
B5302040	PB5 30 20 40	30	100	65	10	20/16	26	22	28	38	30	22	40	25°
B5402544	PB5 40 25 44	40	118	75.5	12.5	25/20	35	30	32.5	48	-	22	44	-
B5503255	PB5 50 32 55	50	130	80	16	32/25	42	35	35	60	-	30	55	-
B5603260	PB5 60 32 60	60	145	82.5	16	32/25	46	42.5	42.5	62.5	-	30	60	-

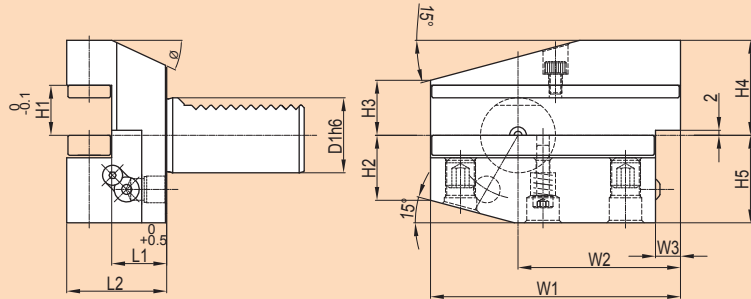
### LEFT HAND LONG-RADIAL FORM B6



ORDER CODE	ITEM NAME	D1	W1	W2	W3	H1	H2	H3	H4	H5	H6	L1	L2	Ø
B6161224	PB6 16 12 24	16	58	39	5	12	15	15	20	22	19	13	24	30°
B6201630	PB6 20 16 30	20	75	50	7	16/12	19	19	25	30	23	16	30	30°
B6251630	PB6 25 16 30	25	75	50	7	16/12	22.5	22.5	25	30	25	16	30	30°
B6302040	PB6 30 20 40	30	100	65	10	20/16	26	22	28	38	30	22	40	25°
B6402544	PB6 40 25 44	40	118	75.5	12.5	25/20	35	30	32.5	48	-	22	44	-
B6503255	PB6 50 32 55	50	130	80	16	32/25	42	35	35	60	-	30	55	-
B6603260	PB6 60 32 60	60	145	82.5	16	32/25	46	42.5	42.5	62.5	-	30	60	-

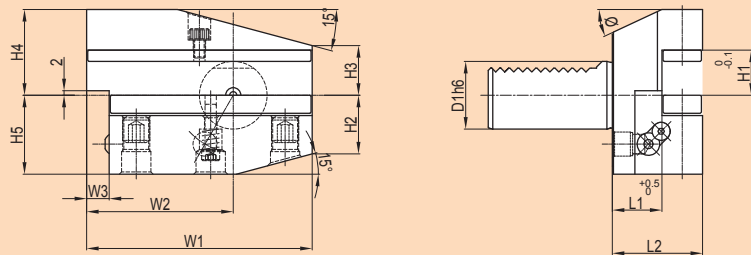


### RIGHT HAND LONG OVER HEAD -RADIAL FORM B7



CODE	ITEM NAME	D1	W1	W2	W3	H1	H2	H3	H4	H5	H6	L1	L2	θ
B7161224	PB7 16 12 24	16	58	39	5	12	15	15	22	20	19	13	24	30°
B7201630	PB7 20 16 30	20	75	50	7	16/12	19	19	30	25	23	16	30	30°
B7251630	PB7 25 16 30	25	75	50	7	16/12	22.5	22.5	30	25	25	16	30	30°
B7302040	PB7 30 20 40	30	100	65	10	20/16	26	22	38	35	28	22	40	25°
B7402544	PB7 40 25 44	40	118	75.5	12.5	25/20	35	30	48	42.5	-	22	44	-
B7503255	PB7 50 32 55	50	130	80	16	32/25	42	35	60	50	-	30	55	-
B7603260	PB7 60 32 60	60	145	82.5	16	32/25	46	42.5	62.5	62.5	-	30	60	-

### LEFT HAND LONG OVER HEAD-RADIAL FORM B8

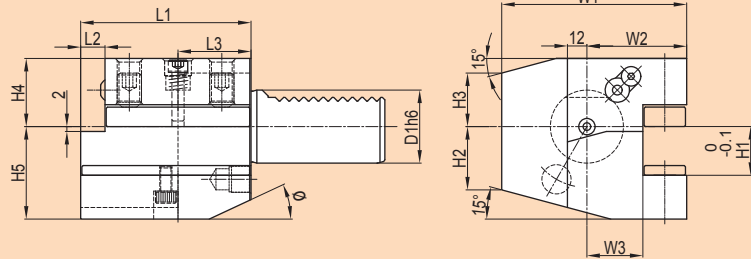
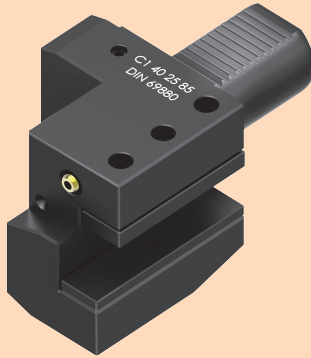


CODE	ITEM NAME	D1	W1	W2	W3	H1	H2	H3	H4	H5	H6	L1	L2	θ
B8161214	PB8 16 12 14	16	58	39	5	12	15	15	22	20	19	13	24	30°
B8201630	PB8 20 16 30	20	75	50	7	16/12	19	19	30	25	23	16	30	30°
B8251630	PB8 25 16 30	25	75	50	7	16/12	22.5	22.5	30	25	25	16	30	30°
B8302040	PB8 30 20 40	30	100	65	10	20/16	26	22	38	35	28	22	40	25°
B8402544	PB8 40 25 44	40	118	75.5	12.5	25/20	35	30	48	42.5	-	22	44	-
B8503255	PB8 50 32 55	50	130	80	16	32/25	42	35	60	50	-	30	55	-
B8603260	PB8 60 32 60	60	145	82.5	16	32/25	46	42.5	62.5	62.5	-	30	60	-



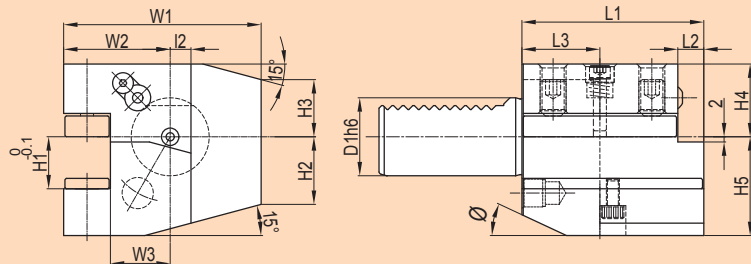


### RIGHT HAND-AXIAL FORM C1



ORDER CODE	ITEM NAME	D1	W1	W2	W3	H1	H2	H3	H4	H5	H6	L1	L2	L3	θ
C1161244	PC1 16 12 44	16	43	24	13	12	15	15	20	22	19	44	5	20	30°
C1201655	PC1 20 16 55	20	52	27	13	16/12	19	19	25	30	23	55	7	30	30°
C1251655	PC1 25 16 55	25	58	33	19	16/12	22.5	22.5	25	30	25	55	7	20	30°
C1302070	PC1 30 20 70	30	70	35	17	20/16	26	22	28	38	30	70	10	30	25°
C1402585	PC1 40 25 85	40	85	42.5	21	25/20	35	30	32.5	48	40	85	12.5	30	15°
C15032100	PC1 50 32 100	50	100	50	26	32/25	42	35	35	60	-	100	16	40	-
C16032125	PC1 60 32 125	60	125	62.5	33	32/25	46	42.5	42.5	62.5	-	125	16	40	-

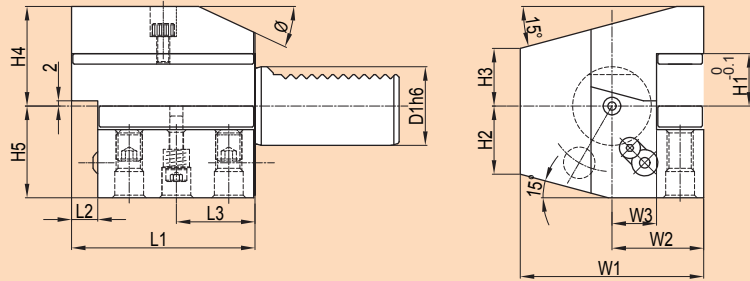
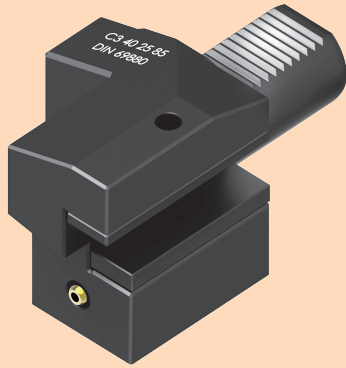
### LEFT HAND - AXIAL FORM C2



ORDER CODE	ITEM NAME	D1	W1	W5	W6	H1	H2	H3	H4	H5	H6	L1	L2	L3	θ
C2161244	PC2 16 12 44	16	43	24	13	12	15	15	20	22	19	44	5	20	30°
C2201655	PC2 20 16 55	20	57	32	18	16/12	19	19	25	30	23	55	32	30	30°
C2251655	PC2 25 16 55	25	58	33	19	16/12	22.5	22.5	25	30	25	55	7	20	30°
C2302070	PC2 30 20 70	30	76	41	23	20/16	26	22	28	38	30	70	10	30	25°
C2402585	PC2 40 25 85	40	90	47.5	25.5	25/20	35	30	32.5	48	40	85	12.5	30	-
C25032100	PC2 50 32 100	50	105	55	30.5	32/25	42	35	35	60	-	100	16	40	-
C26032125	PC2 60 32 125	60	125	62.5	33	32/25	46	42.5	42.5	62.5	-	125	16	40	-

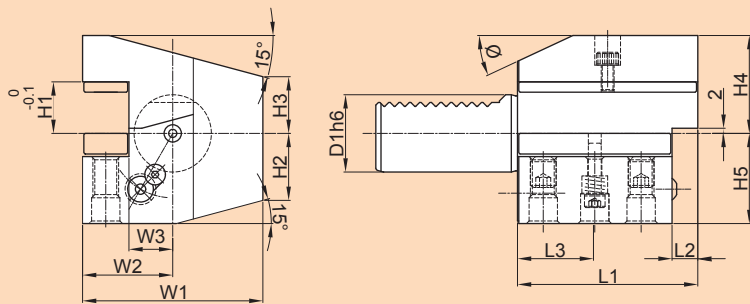
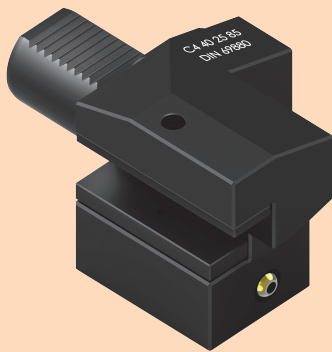


### RIGHT HAND OVER HEAD-AXIAL FORM C3



ORDER CODE	ITEM NAME	D1	W1	W2	W3	H1	H2	H3	H4	H5	H6	L1	L2	L3	Ø
C3161244	PC3 16 12 44	16	43	24	13	12	15	15	22	20	19	44	5	20	30°
C3201655	PC3 20 16 55	20	52	27	13	16/12	19	19	30	25	23	55	7	30	30°
C3251655	PC3 25 16 55	25	58	33	19	16/13	22.5	22.5	30	25	25	55	7	20	30°
C3302070	PC3 30 20 70	30	70	35	17	20/16	26	22	38	35	28	70	10	30	30°
C3402585	PC3 40 25 85	40	85	42.5	21	25/20	35	30	48	42.5	40	85	12.5	30	15°
C35032100	PC3 50 32 100	50	100	50	26	32/25	42	35	60	50	-	100	16	40	-
C36032125	PC3 60 32 125	60	125	62.5	33	32/25	46	42.5	62.5	62.5	-	125	16	40	-

### LEFT HAND OVER HEAD-AXIAL FORM C4



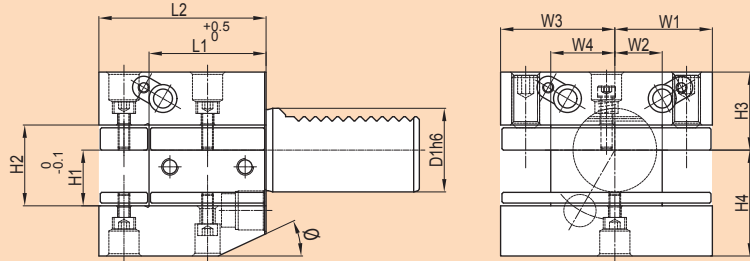
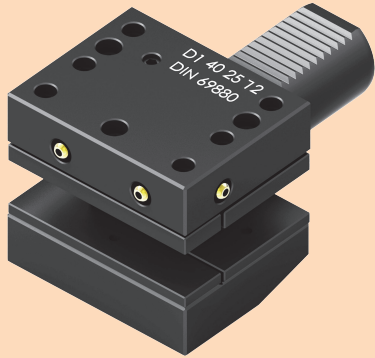
ORDER CODE	ITEM NAME	D1	W4	W5	W6	H1	H2	H3	H4	H5	H6	L1	L2	L3	Ø
C4161244	PC4 16 12 44	16	43	24	13	12	15	15	22	20	19	44	5	20	30°
C4201655	PC4 20 16 55	20	57	32	18	16/12	19	19	30	25	23	55	7	30	30°
C4251655	PC4 25 16 55	25	58	33	19	16/13	22.5	22.5	30	25	25	55	7	20	30°
C4302070	PC4 30 20 70	30	76	41	23	20/16	26	22	38	35	28	70	10	30	25°
C4402585	PC4 40 25 85	40	90	47.5	25.5	25/20	35	30	48	42.5	40	85	12.5	30	15°
C45032100	PC4 50 32 100	50	105	55	30.5	32/25	42	35	60	50	-	100	16	40	-
C46032125	PC4 60 32 125	60	125	62.5	33	32/25	46	42.5	62.5	62.5	-	125	16	40	-





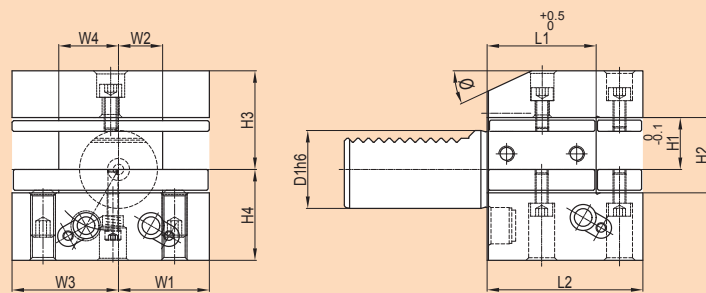
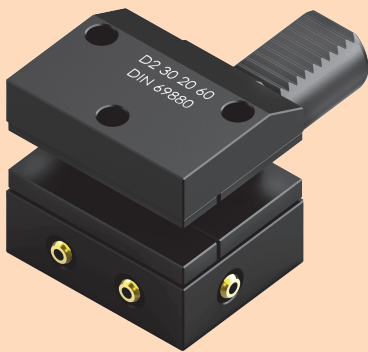


### MULTIPLE SQUARE SEATS HOLDER FORM D1



ORDER CODE	ITEM NAME	D1	W1	W2	W3	W4	H1	H2	H3	H4	L1	L2	Ø
D1251648	PD1 25 16 48	25	33	19	33	19	16/12	25	30	25	34	48	30°
D1302060	PD1 30 20 60	30	35	17	41	23	20/16	28	38	30	42	60	25°
D1402572	PD1 40 25 72	40	42.5	21	47.5	25.5	25/20	32.5	48	40	50	72	15°
D1503285	PD1 50 32 85	50	50	26	55	30.5	32/25	35	60	-	60	85	-
D16032110	PD1 60 32 110	60	57.5	33	57.5	33	32/25	42.5	62.5	-	85	110	-

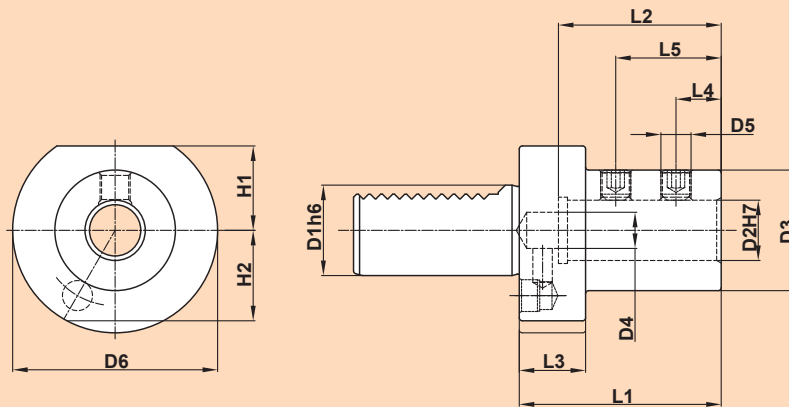
### MULTIPLE SQUARE SEATS OVERHEAD FORM D2



ORDER CODE	ITEM NAME	D1	W1	W2	W3	W4	H1	H2	H3	H4	L1	L2	Ø
D2251648	PD2 25 16 48	25	33	19	33	19	16/12	30	25	25	34	48	30°
D2302060	PD2 30 20 60	30	35	17	41	23	20/16	38	35	28	42	60	25°
D2402572	PD2 40 25 72	40	42.5	21	47.5	25.5	25/20	48	42.5	40	50	72	15°
D2503285	PD2 50 32 85	50	50	26	55	30.5	32/25	60	50	-	60	85	-
D26032110	PD2 60 32 110	60	57.5	33	57.5	33	32/25	62.5	62.5	-	85	110	-



## THROUGH COOLANT BORING BAR HOLDERS FORM E1

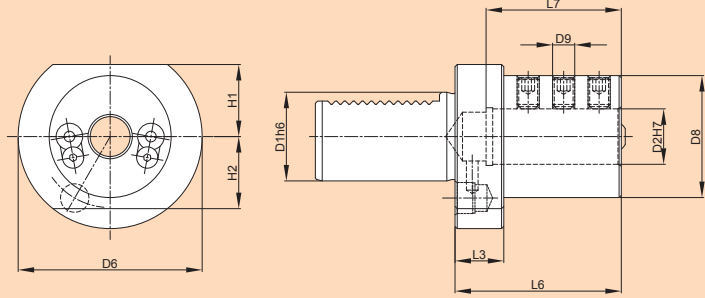


ORDER CODE	ITEM NAME	D1	D2	D3	D4	D5	D6	H1	H2	L1	L2	L3	L4	L5
E12016	PE1 20×16	20	16	36	12	M10×1	50	-	23	64	51	18	15	35
E12020	PE1 20×20	20	20	40	12	M 10×1	50	-	23	67	54	18	15	35
E12025	PE1 20×25	20	25	45	17	M 12×1	50	-	23	71	59	18	17	40
E12516	PE1 25×16	25	16	40	12	M 10×1	58	25	25	67	54	18	15	35
E12520	PE1 25×20	25	20	40	12	M 10×1	58	25	25	67	54	18	15	35
E12525	PE1 25×25	25	25	45	17	M 12×1	58	25	25	71	59	18	17	40
E13016	PE1 30×16	30	16	36	12	M 10×1	58	28	30	64	51	22	15	35
E13020	PE1 30×20	30	20	40	12	M 10×1	68	28	30	67	54	22	15	35
E13025	PE1 30×25	30	25	45	17	M 12×1	68	28	30	71	59	22	17	40
E13032	PE1 30×32	30	32	52	24	M 12×1	68	28	30	75	63	22	17	44
E13040	PE1 30×40	30	40	65	32	M 16×1	68	28	30	90	73	22	22	50
E14016	PE 1 40×16	40	16	36	12	M 10×1	83	32.5	-	64	51	22	15	35
E14020	PE1 40×20	40	20	40	12	M 10×1	83	32.5	-	67	54	22	15	35
E14025	PE1 40×25	40	25	45	17	M 12×1	83	32.5	-	75	59	22	17	40
E14032	PE1 40×32	40	32	52	24	M 12×1	83	32.5	-	75	63	22	17	44
E14040	PE1 40×40	40	40	65	32	M 16×1	83	32.5	-	90	73	22	22	50
E15020	PE1 50×20	50	20	40	12	M 10×1	98	35	-	67	54	30	15	35
E15025	PE1 50×25	50	25	45	17	M 12×1	98	35	-	80	59	30	17	40
E15032	PE1 50×32	50	32	52	24	M 12×1	98	35	-	80	63	30	17	44
E15040	PE1 50×40	50	40	65	32	M 16×1	98	35	-	90	73	30	22	50
E15050	PE1 50X50	50	50	75	42	M 16×1	98	35	-	100	83	30	15	35
E16020	PE1 60×20	60	20	40	12	M 10×1	123	42.5	-	80	54	30	15	35
E16025	PE1 60×25	60	25	45	17	M 12×1	123	42.5	-	80	59	30	17	40
E16032	PE1 60×32	60	32	52	24	M 12×1	123	42.5	-	80	63	30	17	44
E16040	PE1 60×40	60	40	65	32	M 16×1	123	42.5	-	90	73	30	22	50
E16050	PE1 60×50	60	50	75	42	M 16×1	123	42.5	-	100	83	30	24	60





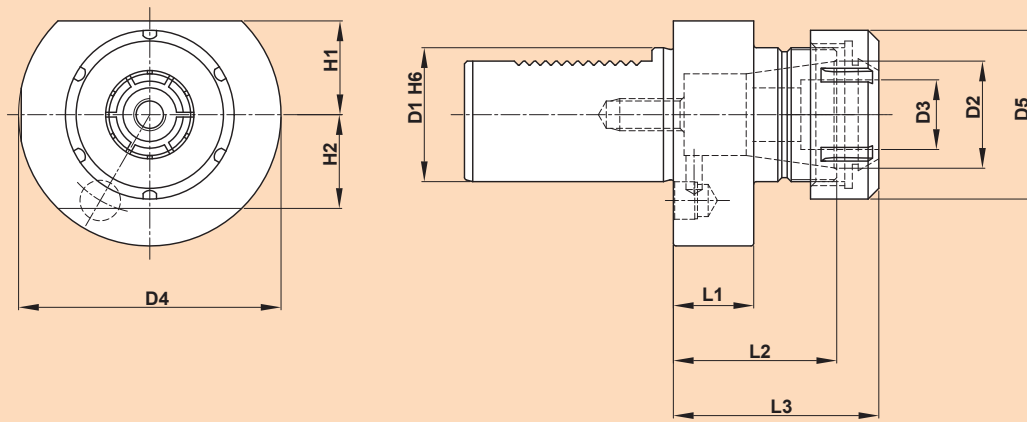
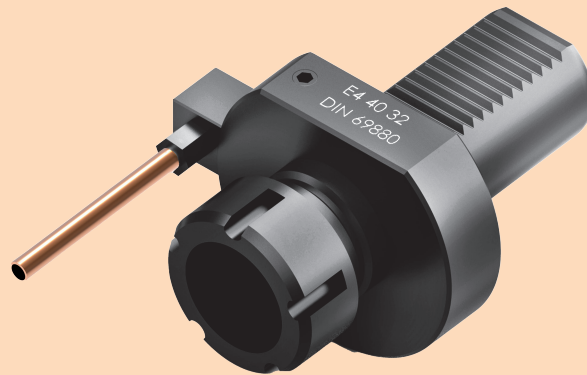
**BORING BAR HOLDERS FORM E2**



ORDER CODE	ITEM NAME	D1	D2	D3	D4	D5	H1	H2	L1	L2	L3
E21606	PE2 16x6	16	6	40	32	M6	18	18	13	44	34
E21608	PE2 16x8	16	8	40	32	M6	18	18	13	44	34
E21610	PE2 16x10	16	10	40	32	M6	18	18	13	44	34
E21612	PE2 16x12	16	12	40	40	M8	18	18	-	44	34
E21616	PE2 16x16	16	16	40	40	M8	18	18	-	44	34
E22008	PE2 20x8	20	8	50	40	M6	-	23	18	50	41
E22010	PE2 20x10	20	10	50	40	M6	-	23	18	50	41
E22012	PE2 20x12	20	12	50	40	M8	-	23	18	50	41
E22016	PE2 20x16	20	16	50	40	M8	-	23	18	50	41
E22020	PE2 20x20	20	20	50	50	M8	-	23	-	50	41
E22025	PE2 20x25	20	25	50	50	M8	-	23	-	60	51
E22508	PE2 25x8	25	8	58	40	M6	25	25	18	50	41
E22510	PE2 25x10	25	10	58	40	M6	25	25	18	50	41
E22512	PE2 25x12	25	12	58	40	M8	25	25	18	50	41
E22516	PE2 25x16	25	16	58	40	M8	25	25	18	50	41
E22520	PE2 25x20	25	20	58	58	M8	25	25	18	50	41
E22525	PE2 25x25	25	25	58	58	M8	25	25	18	60	51
E23008	PE2 30x8	30	8	68	55	M6	28	30	18	60	51
E23010	PE2 30x10	30	10	68	55	M6	28	30	22	60	51
E23012	PE2 30x12	30	12	68	55	M8	28	30	22	60	51
E23016	PE2 30x16	30	16	68	55	M8	28	30	22	60	51
E23020	PE2 30x20	30	20	68	55	M8	28	30	22	60	51
E23025	PE2 30x25	30	25	68	55	M8	28	30	22	60	51
E23032	PE2 30x32	30	32	68	68	M8	28	30	-	75	61
E24008	PE2 40x8	40	8	83	55	M6	32.5	-	22	75	51
E24010	PE2 40x10	40	10	83	55	M8	32.5	-	22	75	51
E24012	PE2 40x12	40	12	83	55	M8	32.5	-	22	75	61
E24016	PE2 40x16	40	16	83	55	M10	32.5	-	22	75	61
E24020	PE2 40x20	40	20	83	55	M10	32.5	-	22	75	61
E24025	PE2 40x25	40	25	83	55	M10	32.5	-	22	75	61
E24032	PE2 40x32	40	32	83	83	M10	32.5	-	-	75	61
E24040	PE2 40x40	40	40	83	83	M10	32.5	-	-	90	76
E25016	PE2 50x16	50	16	98	68	M10	35	-	30	90	76
E25020	PE2 50x20	50	20	98	68	M12	35	-	30	90	76
E25025	PE2 50x25	50	25	98	68	M12	35	-	30	90	76
E25032	PE2 50x32	50	32	98	68	M12	35	-	30	90	76
E25040	PE2 50x40	50	40	98	98	M12	35	-	-	90	76
E25050	PE2 50x50	50	50	98	98	M12	35	-	-	100	86
E26016	PE2 60x16	60	16	123	68	M10	42.5	-	30	90	76
E26020	PE2 60x20	60	20	123	68	M12	42.5	-	30	90	76
E26025	PE2 60x25	60	25	123	68	M12	42.5	-	30	90	76
E26032	PE2 60x32	60	32	123	68	M12	42.5	-	30	90	76
E26040	PE2 60x40	60	40	123	98	M12	42.5	-	30	90	76
E26050	PE2 60x50	60	50	123	98	M12	42.5	-	30	100	86



## COLLET CHUCKS AS PER DIN 6499 FORM E4



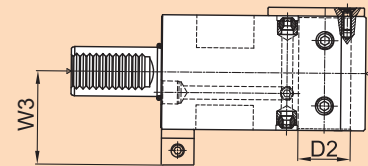
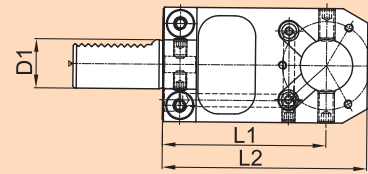
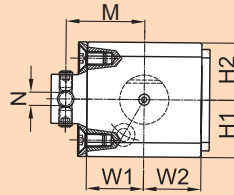
ORDER CODE	ITEM NAME	D1	D2	D3	D4	D5	H1	H2	L1	L2	L3
E41616	PE4 16x16	16	16	0.5-10	40	28	18	-	13	27.5	34.5
E41620	PE4 16x20	16	20	1	40	34	18	18	13	32.5	44
E42016	PE4 20x16	20	16	0.5-10	50	28	-	23	18	32.5	44
E42020	PE4 20x20	20	20	1	50	34	-	23	18	32.5	44
E42025	PE4 20x25	20	25	1	50	42	-	23	18	38	50
E42520	PE4 25x20	25	25	1	58	34	25	25	18	32.5	44
E42525	PE4 25x25	25	25	1	58	42	25	25	18	45	57
E42532	PE4 25x32	32	25	2	58	50	25	25	18	49.5	62
E43025	PE4 30x25	30	25	1	68	42	28	30	22	45	57
E43032	PE4 30x32	30	32	2	68	50	28	30	22	49.5	62.5
E43040	PE4 30x40	30	40	3	68	63	28	30	22	56	70
E44025	PE4 40x25	40	25	1	83	42	32.5	-	22	49.5	62
E44032	PE4 40x32	40	32	2	83	50	32.5	-	30	49.5	62
E44040	PE4 40x40	40	40	3	83	63	32.5	-	22	61	75
E45025	PE4 50x25	50	25	1	98	42	35	-	22	45	57
E45032	PE4 50x32	50	32	2	98	50	35	-	30	61	75
E45040	PE4 50x40	50	40	3	98	63	35	-	30	61	75
E46032	PE4 60x32	60	32	2	123	50	42.5	-	30	61	75
E46040	PE4 60x40	60	40	3	123	63	42.5	-	30	61	75





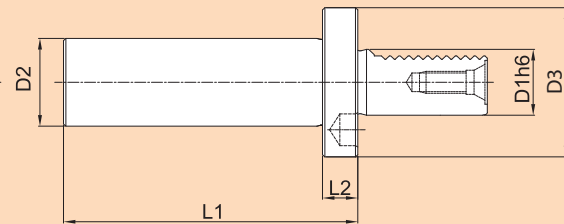
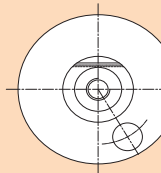


## RBTH (RADIAL BORING TOOL HOLDER FOR RADIAL TOOL DISC)



ORDER CODE	ITEM NAME	D1	D2	H1	H2	W1	W2	W3	L1	L2	N	M
RBTH252575	PRBTH 25 25 CH -75	25	25	32	32	35	35	57	75	100	8	40
RBTH253275	PRBTH 25 32 CH -75	25	32	32	32	35	35	57	75	100	8	40
RBTH302585	PRBTH 30 25 CH -85	30	25	35	35	35	35	57	85	110	8	48
RBTH303285	PRBTH 30 32 CH -85	30	32	35	35	35	35	57	85	110	8	48
RBTH304085	PRBTH 30 40 CH -85	30	40	35	35	35	35	57	85	110	8	48
RBTH3025100	PRBTH 30 25 CH -100	30	25	35	35	35	35	57	100	125	8	48
RBTH3032100	PRBTH 30 32 CH -100	30	32	35	35	35	35	57	100	125	8	48
RBTH3040100	PRBTH 30 40 CH -100	30	40	35	35	35	35	57	100	125	8	48
RBTH4025100	PRBTH 40 25 CH -100	40	25	38	38	45	45	65	100	130	10	56
RBTH4032100	PRBTH 40 32 CH -100	40	32	38	38	45	45	65	100	130	10	56
RBTH4040100	PRBTH 40 40 CH -100	40	40	38	38	45	45	65	100	130	10	56
RBTH5050120	PRBTH 50 50 CH -120	50	50	48	48	50	50	73.5	120	155	10	63

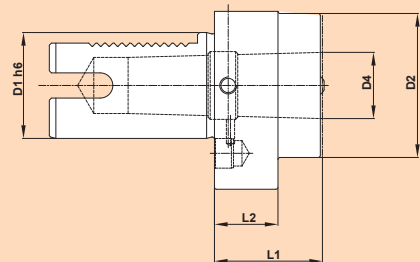
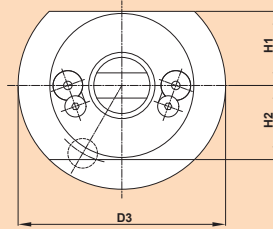
## TEST MANDREL



ORDER CODE	ITEM NAME	D1	D2	D3	L1	L2
Y16	PY 16	16	30	40	125	15
Y20	PY 20	20	40	50	125	15
Y25	PY 25	25	40	58	125	15
Y30	PY 30	30	40	68	125	15
Y40	PY 40	40	40	83	125	15
Y50	PY 50	50	40	98	125	15
Y60	PY 60	60	40	123	125	15

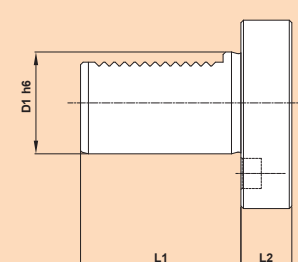
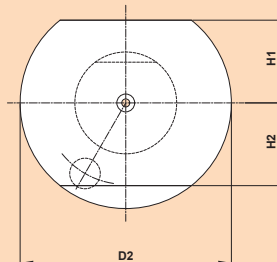


## MORSE TAPER HOLDERS FORM F



ORDER CODE	ITEM NAME	D1	D2	MT	D3	D4	H1	H2	L1	L2
F16MT1	PF 16 MT 1	16	40	1	12.065	-	18	18	50	-
F16MT2	PF 16 MT 2	16	40	2	17.78	-	18	18	87	-
F20MT1	PF 20 MT 1	20	50	1	12.065	-	-	23	23	-
F20MT2	PF 20 MT 2	20	50	2	17.78	-	-	23	61	-
F25MT1	PF 25 MT 1	25	58	1	12.065	-	25	25	23	-
F25MT2	PF 25 MT 2	25	58	2	17.78	-	25	25	27	-
F30MT1	PF 30 MT 1	30	68	1	12.065	-	28	30	27	-
F30MT2	PF 30 MT 2	30	68	2	17.78	-	28	30	27	-
F30MT3	PF 30 MT 3	30	68	3	23.825	-	28	30	73	-
F40MT1	PF 40 MT 1	40	83	1	12.065	55	32.5	-	36	22
F40MT2	PF 40 MT 2	40	83	2	17.78	55	32.5	-	36	22
F40MT3	PF 40 MT 3	40	83	3	23.825	58	32.5	-	36	22
F40MT4	PF 40 MT 4	40	83	4	31.267	68	32.5	-	80	22
F50MT1	PF 50 MT 1	50	98	1	12.065	55	35	-	36	30
F50MT2	PF 50 MT 2	50	98	2	17.78	55	35	-	36	30
F50MT3	PF 50 MT 3	50	98	3	23.825	58	35	-	36	30
F50MT4	PF 50 MT 4	50	98	4	31.267	68	35	-	50	30
F50MT5	PF 50 MT 5	50	98	5	44.399	98	35	-	169	-
F60MT2	PF 60 MT 2	60	123	2	17.78	55	42.5	-	36	30
F60MT3	PF 60 MT 3	60	123	3	23.825	58	42.5	-	36	30
F60MT4	PF 60 MT 4	60	123	4	31.267	68	42.5	-	50	30
F60MT5	PF 60 MT 5	60	123	5	44.399	98	42.5	-	63	31

## PLUG – FORM Z2

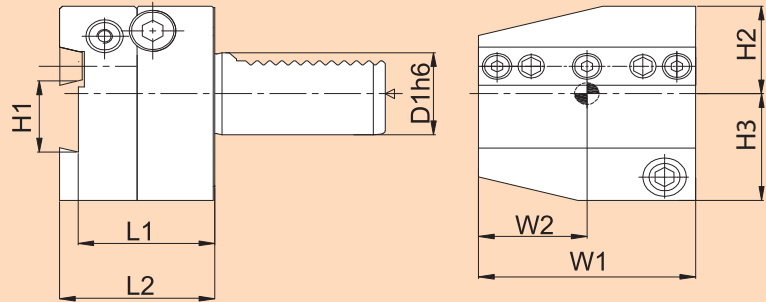
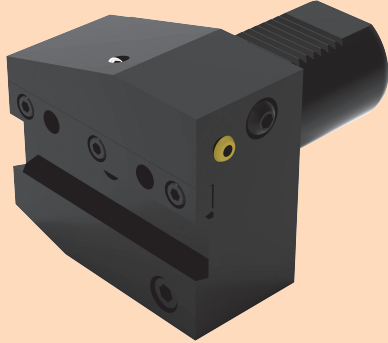


ORDER CODE	ITEM NAME	D1	D2	H1	H2	L1	L2	
Z216S	- PZ2 16S	-	16	40	18	18	32	13
Z220S	- PZ2 20S	-	20	50	23	23	40	16
Z225S	Z225P PZ2 25S	Z2 25P	25	58	25	25	48	16
Z230S	Z230P PZ2 30S	Z2 30P	30	68	28	30	55	16
Z240S	Z240P PZ2 40S	Z2 40P	40	83	32.5	-	63	20
Z250S	Z250P PZ2 50S	Z2 50P	50	98	35	-	78	20
Z260S	- PZ2 60S	-	60	123	42.5	-	94	20



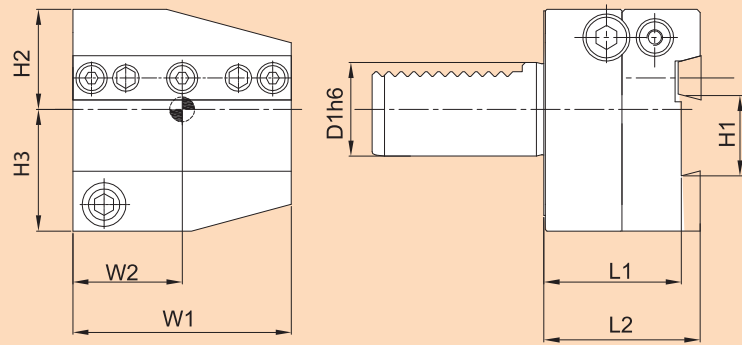


### CUTOFF TOOL HOLDER CHR



CODE	ITEM NAME	D1	W1	W2	H1	H2	H3	L1	L2
CHR2026	CHR20 26	20	60	30	26	28	36	44	50
CHR2526	CHR25 26	25	60	30	26	28	36	44	50
CHR3026	CHR30 26	30	70	35	26	32	39	44	50
CHR3032	CHR30 32	30	70	35	32	32	39	44	50
CHR4026	CHR40 26	40	85	42.5	26	43	41.5	44	50
CHR4032	CHR40 32	40	85	42.5	32	43	41.5	44	50
CHR5026	CHR50 26	50	100	50	26	43	45	44	50
CHR5032	CHR50 32	50	100	50	32	43	45	44	50
CHR6026	CHR60 26	60	125	62.5	26	48	55	44	50
CHR6032	CHR60 32	60	125	62.5	32	48	55	44	50

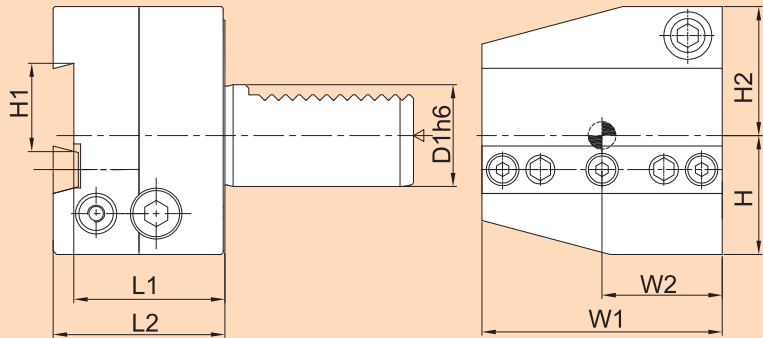
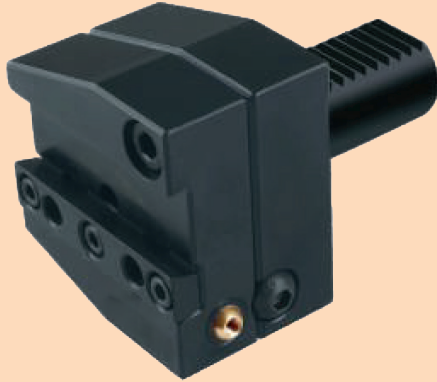
### CUTOFF TOOL HOLDER CHL



CODE	ITEM NAME	D1	W1	W2	H1	H2	H3	L1	L2
CHL2026	CHL20 26	20	60	30	26	28	36	44	50
CHL2526	CHL25 26	25	60	30	26	28	36	44	50
CHL3026	CHL30 26	30	70	35	26	32	39	44	50
CHL3032	CHL30 32	30	70	35	32	32	39	44	50
CHL4026	CHL40 26	40	85	42.5	26	43	41.5	44	50
CHL4032	CHL40 32	40	85	42.5	32	43	41.5	44	50
CHL5026	CHL50 26	50	100	50	26	43	45	44	50
CHL5032	CHL50 32	50	100	50	32	43	45	44	50
CHL6026	CHL60 26	60	125	62.5	26	48	55	44	50
CHL6032	CHL60 32	60	125	62.5	32	48	55	44	50

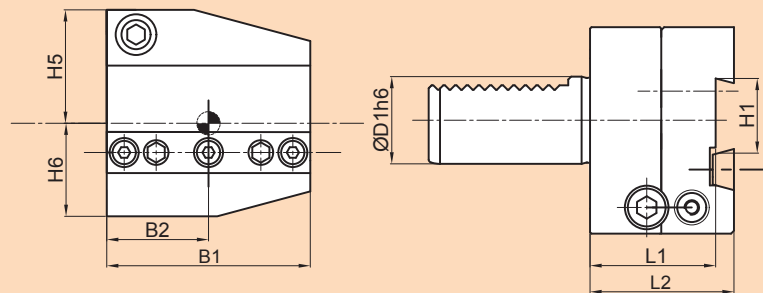


### CUTOFF TOOL HOLDER CHRU



CODE	ITEM NAME	D1	W1	W2	H1	H2	H3	L1	L2
CHRU2526	CHRU25 26	25	60	30	26	36	28	44	50
CHRU3026	CHRU30 26	30	70	35	26	38	35	44	50
CHRU3032	CHRU30 32	30	70	35	32	38	35	44	50
CHRU4026	CHRU40 26	40	85	42.5	26	43	41.5	44	50
CHRU4032	CHRU40 32	40	85	42.5	32	43	41.5	44	50
CHRU5026	CHRU50 26	50	100	50	26	43	45	44	50
CHRU5032	CHRU50 32	50	100	50	32	43	45	44	50
CHRU6026	CHRU60 26	60	125	62.5	26	48	55	44	50
CHRU6032	CHRU60 32	60	125	62.5	32	48	55	44	50

### CUTOFF TOOL HOLDER CHLU

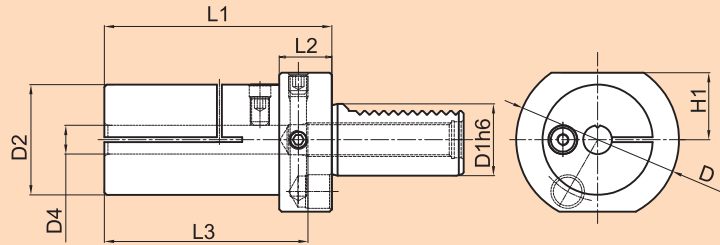


CODE	ITEM NAME	D1	W1	W2	H1	H2	H3	L1	L2
CHLU2526	CHLU25 26	25	60	30	26	36	28	44	50
CHLU3026	CHLU30 26	30	70	35	26	38	35	44	50
CHLU3032	CHLU30 32	30	70	35	32	38	35	44	50
CHLU4026	CHLU40 26	40	85	42.5	26	43	41.5	44	50
CHLU4032	CHLU40 32	40	85	42.5	32	43	41.5	44	50
CHLU5026	CHLU50 26	50	100	50	26	43	45	44	50
CHLU5032	CHLU50 32	50	100	50	32	43	45	44	50
CHLU6026	CHLU60 26	60	125	62.5	26	48	55	44	50
CHLU6032	CHLU60 32	60	125	62.5	32	48	55	44	50





**DAMPED TOOL HOLDER E2-S**

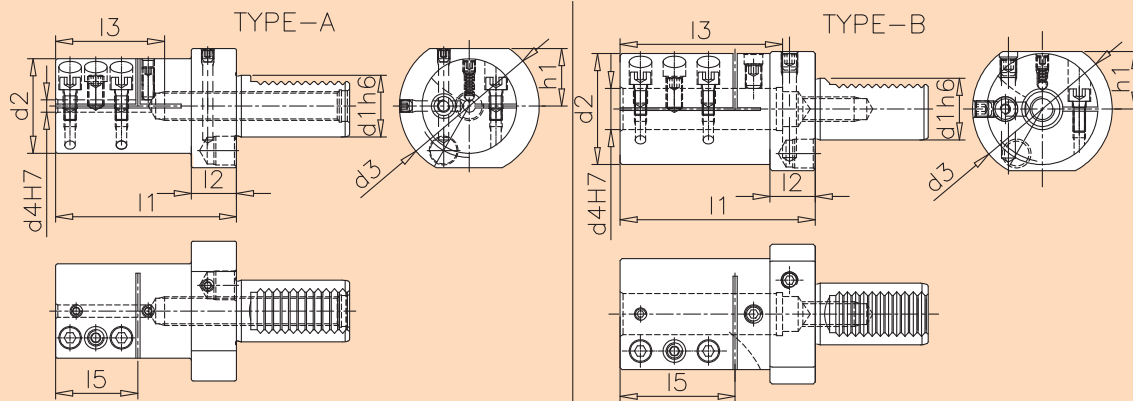


CODE	ITEM NAME	D1	D2	D3	D4	H1	L1	L2	L3
E2S2506	PE2-S-25X06	25	40	58	6	25	81	18	59
E2S2508	PE2-S-25X08	25	40	58	8	25	81	18	63
E2S2510	PE2-S-25X10	25	40	58	10	25	84	18	65
E2S2512	PE2-S-25X12	25	40	58	12	25	84	18	70
E2S2516	PE2-S-25X16	25	50	58	16	25	88	18	70
E2S2520	PE2-S-25X20	25	54	58	20	25	96	18	80
E2S2525	PE2-S-25X25	25	59	58	25	25	96	18	80
E2S2532	PE2-S-25X32	25	65	58	32	25	96	18	80
E2S3006	PE2-S-30x06	30	46	68	6	28	88	22	53
E2S3008	PE2-S-30x08	30	46	68	8	28	88	22	53
E2S3010	PE2-S-30x10	30	46	68	10	28	88	22	65
E2S3012	PE2-S-30x12	30	46	68	12	28	88	22	70
E2S3016	PE2-S-30x16	30	50	68	16	28	88	22	70
E2S3020	PE2-S-30x20	30	54	68	20	28	96	22	80
E2S3025	PE2-S-30x25	30	58	68	25	28	112	22	100
E2S3032	PE2-S-30x32	30	63	68	32	28	142	22	128
E2S3040	PE2-S-30x40	30	73	68	40	28	174	22	150
E2S4006	PE2-S40x06	40	46	83	6	32.5	88	22	53
E2S4008	PE2-S40x08	40	46	83	8	32.5	88	22	53
E2S4010	PE2-S40x10	40	46	83	10	32.5	88	22	65
E2S4012	PE2-S-40x12	40	46	83	12	32.5	95	22	85
E2S4016	PE2_S-40x16	40	50	83	16	32.5	88	22	70
E2S4020	PE2_S-40x20	40	54	83	20	32.5	96	22	80
E2S4025	PE2-S-40x25	40	58	83	25	32.5	112	22	100
E2S4032	PE2-S-40x32	40	63	83	32	32.5	142	22	128
E2S4040	PE2_S-40x40	40	73	83	40	32.5	174	22	150
E2S5016	PE2-S-50x16	50	50	98	16	35	103	30	85
E2S5020	PE2-S-50x20	50	54	98	20	35	103	30	89
E2S5025	PE2-S-50x25	50	59	98	25	35	120	30	106
E2S5032	PE2-S-50x32	50	65	98	32	35	150	30	128
E2S5040	PE2-S-50x40	50	73	98	40	35	182	30	160
E2S5050	PE2-S-50x50	50	83	98	50	35	182	30	160
E2S6025	PE2-S-60x25	60	59	123	25	42.5	120	30	106
E2S6032	PE2-S-60x32	60	65	123	32	42.5	150	30	128
E2S6040	PE2-S-60x40	60	73	123	40	42.5	182	30	160
E2S6050	PE2-S-60x50	60	83	123	50	42.5	202	30	180
E2S6060	PE2-S-60x60	60	102	123	60	42.5	202	30	180





## K-SHORTER LENGTH

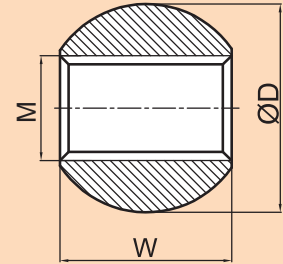
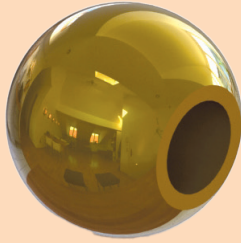


CODE NO	d1	d2	d3	d4	h1	l2	l1	l3	l5	*n	l1	l3	l5	*P	TYPE
E2-S 25X06	25	46	58	06	25	18	88	65	40	02					A
E2-S 25X08	25	46	58	08	25	18	88	65	40	02					A
E2-S 25X10	25	46	58	10	25	18	88	65	40	02					A
E2-S 25X12	25	46	58	12	25	18	88	65	40	02					A
E2-S 25X16	25	50	58	16	25	18	88	70	48	02					B
E2-S 25X20	25	54	58	20	25	18	96	80	56	02					B
E2-S 25X25	25	59	58	25	25	18	96	80	56	02					B
E2-S 25X32	25	65	58	32	25	18	96	80	56	02					B
E2-S 30X06	30	46	68	06	28	28	88	65	40	02					A
E2-S 30X08	30	46	68	08	28	22	88	65	40	02					A
E2-S 30X10	30	46	68	10	28	22	88	65	40	02					A
E2-S 30X12	30	46	68	12	28	22	88	65	40	02					A
E2-S 30X16	30	50	68	16	28	22	88	70	48	02					A
E2-S 30X20	30	54	68	20	28	22	96	80	56	02					B
E2-SK 30X25	30	59	68	25	28	22					83	66	43	02	B
E2-SK 30X32	30	65	68	32	28	22					96	80	56	02	B
E2-SK 30X40	30	73	68	40	28	22					114	100	69	02	B
E2-S 40X06	40	46	83	06	32.5	22	88	65	40	02					A
E2-S 40X08	40	46	83	08	32.5	22	88	65	40	02					A
E2-S 40X10	40	46	83	10	32.5	22	88	65	40	02					A
E2-S 40X12	40	46	83	12	32.5	22	88	65	40	02					A
E2-S 40X16	40	50	83	16	32.5	22	88	70	48	02					A
E2-S 40X20	40	54	83	20	32.5	22	96	80	56	02					A
E2-SK 40X25	40	59	83	25	32.5	22					96	80	56	02	B
E2-SK 40X32	40	65	83	32	32.5	22					96	80	56	02	B
E2-SK 40X40	40	73	83	40	32.5	22					124	100	69	02	B
E2-SK 40X50	40	83	98	50	35	30					147	125	100	03	B
E2-S 50X16	50	50	98	16	35	30	103	85	48	02					A
E2-S 50X20	50	54	98	20	35	30	103	80	56	02					A
E2-SK 50X25	50	59	98	25	35	30					104	90	61	02	A
E2-SK 50X32	50	65	98	32	35	30					112	90	61	02	B
E2-SK 50X40	50	73	98	40	35	30					122	100	69	02	B
E2-SK 50X50	50	83	98	50	35	30					147	125	100	03	B
E2-SK 50X60	50	102	102	60	35	30					172	150	120	03	B
E2-SK 60X25	60	59	123	25	42.5	30					110	90	61	02	A
E2-SK 60X32	60	65	123	32	42.5	30					112	90	61	02	A
E2-SK 60X40	60	73	123	40	42.5	30					122	100	69	03	B
E2-SK 60X50	60	83	123	50	42.5	30					147	125	100	03	B
E2-SK 60X60	60	102	123	60	42.5	30					172	150	120	03	B



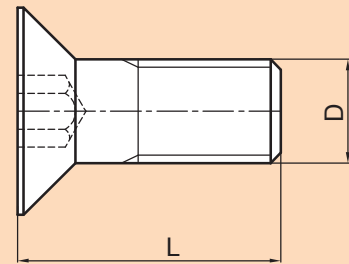
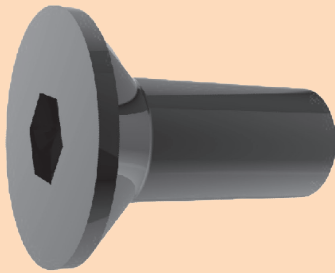


### CSK COOLANT BALL SPARE PARTS COOLANT BALL



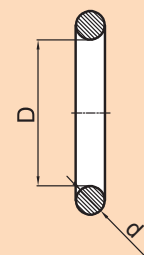
ORDER CODE	ITEM NAME	ØD	W	M
CB85	Ø8XM5	8	7	M5
CB106	Ø10XM6	10	8	M6
CB126	Ø12XM6	12	10	M6
CB146	Ø14XM6	14	13	M6

### CSK SCREW



ORDER CODE	ITEM NAME	L	D
	M3X10	10	M3
	M4X12	12	M4
	M5X12	12	M5
	M6X12	10	M6

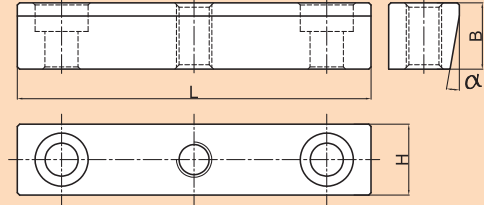
### O RING



ORDER CODE	ITEM NAME	D	d
OR515	O-Ring Ø5XØ1.5	Ø5	Ø1.5
OR715	O-Ring Ø7XØ1.5	Ø7	Ø1.5
OR725	O-Ring Ø7XØ2.5	Ø7	Ø2.5
OR102	O-Ring Ø10XØ2	Ø10	Ø2

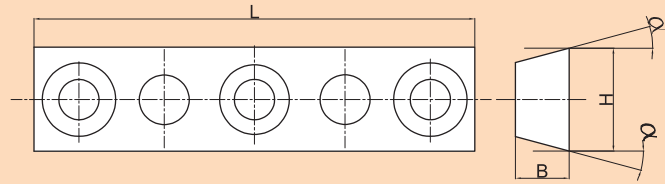
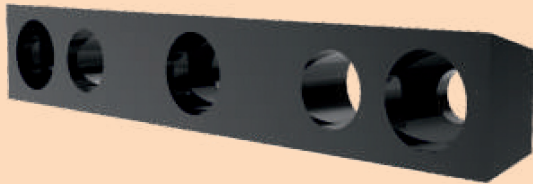


### WEDGE CLAMP



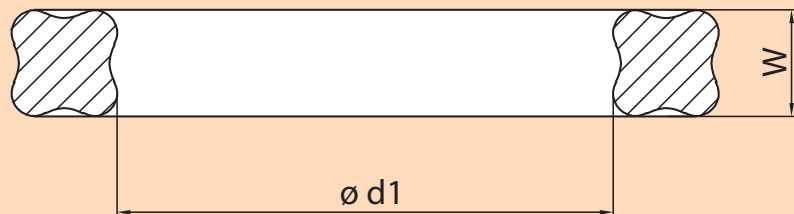
ORDER CODE	ITEM NAME	L	B	H	Ø
WC-20 80X16X15	Wedge Clamp-20	80	15	16	10°
WC-20 90X21X19	Wedge Clamp-25	90	21	19	10°
WC-32 100X26.5x26.5	Wedge Clamp-32	100	26.5	26.5	10°

### DOVETAIL CLAMP



ORDER CODE	ITEM NAME	L	B	H	Ø
CD 34 36 03	Dovetail Clamp-20&25	60	7.3	14	15°
CD 36 50 03	Dovetail Clamp-30	70	7.3	14	15°
CD 40 50 03	Dovetail Clamp-40	85	7.3	14	15°
CD 50 48 03	Dovetail Clamp-50&60	100	7.3	14	15°

### QUAD RING

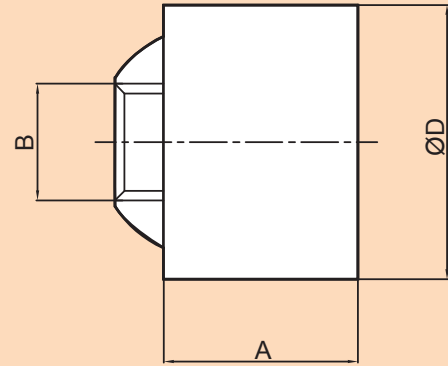


ORDER CODE	ITEM NAME	Ø d1	W
QRAR04027	Quad Ring	33.05	1.78



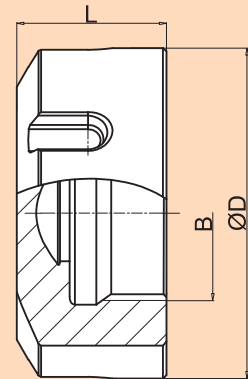


## PRESS FIT COOLANT BALL



ORDER CODE	ITEM NAME	ØD	A	B
PMB10xM4	Ø10xM4	Ø10	7	M4
PMB12xM6	Ø12xM6	Ø12	8	M6
PMB14xM8	Ø14xM8	Ø14	10	M8

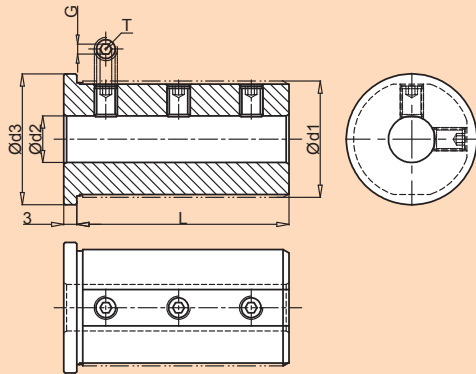
## EXTERNAL NUT



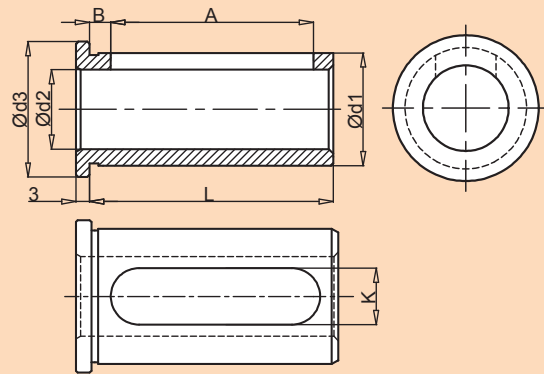
ORDER CODE	ITEM NAME	ØD	L	B
ER1618	ER16	28	18	M22x1.5
ER2019	ER20	35	19	M25x1.5
ER2521	ER25	42	21	M32x1.5
ER3223	ER32	50	23	M40x1.5
ER4026	ER40	63	26	M50x1.5



## UNIVERSAL REDUCTION SLEEVES



SUITABLE FOR BORING TOOL HOLDERS WITH SMALLER SHANK TOOLS



SUITABLE FOR BORING TOOL HOLDERS WITH LARGE SHANK TOOLS TYPE-K (KEYWAY TYPE)

ARTICLE CODE	Ød1	Ød2	Ød3	L	GRUB SCREW T
RSU200839	20	08	25	39	M6X5
RSU201039		10			M6X5
RSU250850	25	08	30	50	M6X8
RSU251050		10			M8X6
RSU251250		12			M8X6
RSU320859	32	08	37	59	M6X10
RSU321059		10			M8X10
RSU321259		12			M8X8
RSU321659		16			M8X6
RSU400869	40	08	45	69	M6X12
RSU401069		10			M8X12
RSU401269		12			M8X12
RSU401669		16			M8X10
RSU402069		20			M8X8
RSU402569		25			M8X6
RSU500880	50	08	55	80	M6X16
RSU501080		10			M8X16
RSU501280		12			M8X16
RSU501680		16			M10X16
RSU502080		20			M10X12
RSU502580		25			M10X12
RSU503280		32			M10X8

ARTICLE CODE	Ød1	Ød2	Ød3	K	L	A	B
RSUK201239	20	12	25	9	39	32.5	3.5
RSUK201639		16					
RSUK201252	20	12	25	13	52	45.5	3.5
RSUK201652		16					
RSUK251650	25	16	30	13	50	43.5	3.5
RSUK252050		20					
RSUK322059	32	20	37	13	59	51	5
RSUK322559		25					
RSUK403269	40	32	45	17	69	61	5
RSUK504080	50	40	55	17	80	72	5

• Made out of C45 material & toughen to 20±2 HRC

**NOMENCLATURE FOR ORDER CODE** | REDUCTION SLEEVE - **RS** | UNIVERSAL TYPE - **U** | NILL-SMALLER TOOL SHANK & K-LARGER TOOL SHANK - **K**  
TOTAL LENGTH - **XX** | TOOL SHANK DIAMETER - **XX** | TOOL HOLDER BORE - **XX**

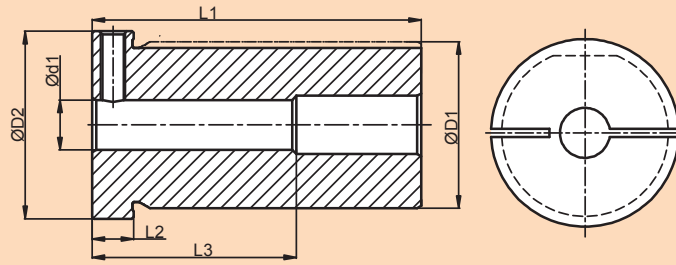
• Customized design can be supplied upon request. • All dimensions are in mm.



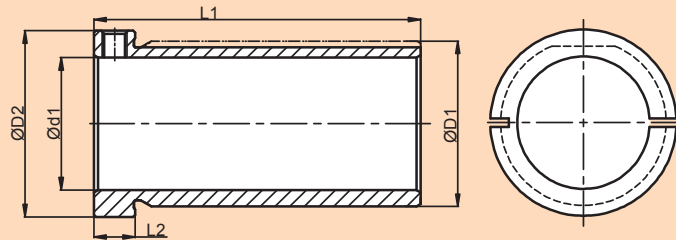




## UNIVERSAL SLIT REDUCTION SLEEVES



SUITABLE FOR BORING TOOL HOLDERS WITH SMALLER SHANK TOOLS



SUITABLE FOR BORING TOOL HOLDERS WITH LARGE SHANK TOOLS TYPE-K (KEYWAY TYPE)

MATERIAL ID	ØD1	ØD2	Ød1	L1	L2	L3	L3/Ød1 RATIO
RSSE1E2250860	25	30	08	60	10	50	6
RSSE1E2251060			10			50	5
RSSE1E2251260			12			50	4
RSSE1E2251460			14			50	3.5
RSSE1E2320869	32	37	08	69	10	50	6
RSSE1E2321069			10			50	5
RSSE1E2321269			12			50	4
RSSE1E2321469			14			50	3.5
RSSE1E2400879	40	45	08	79	10	50	6
RSSE1E2401079			10			50	5
RSSE1E2401279			12			50	4
RSSE1E2401479			14			50	3.5
RSSE1E2500890	50	55	08	90	10	50	6
RSSE1E2501090			10			50	5
RSSE1E2501290			12			50	4
RSSE1E2501490			14			50	3.5

MATERIAL ID	ØD1	ØD2	Ød1	L1	L2	L1/Ød1 RATIO
RSSE1E2251660	25	30	16	60	10	3.8
RSSE1E2251860			18			3.3
RSSE1E2252060			20			3.0
RSSE1E2321669			16			4.3
RSSE1E2321869	32	37	18	69	10	3.8
RSSE1E2322069			20			3.5
RSSE1E2322569			25			2.8
RSSE1E2401679	40	45	16	79	10	5.0
RSSE1E2401879			18			4.4
RSSE1E2402079			20			4.0
RSSE1E2402579			25			3.2
RSSE1E2403279			32			2.5
RSSE1E2501690	50	55	16	90	10	5.6
RSSE1E2501890			18			5.0
RSSE1E2502090			20			4.5
RSSE1E2502590			25			3.6
RSSE1E2503290			32			2.8
RSSE1E2504090			40			2.3

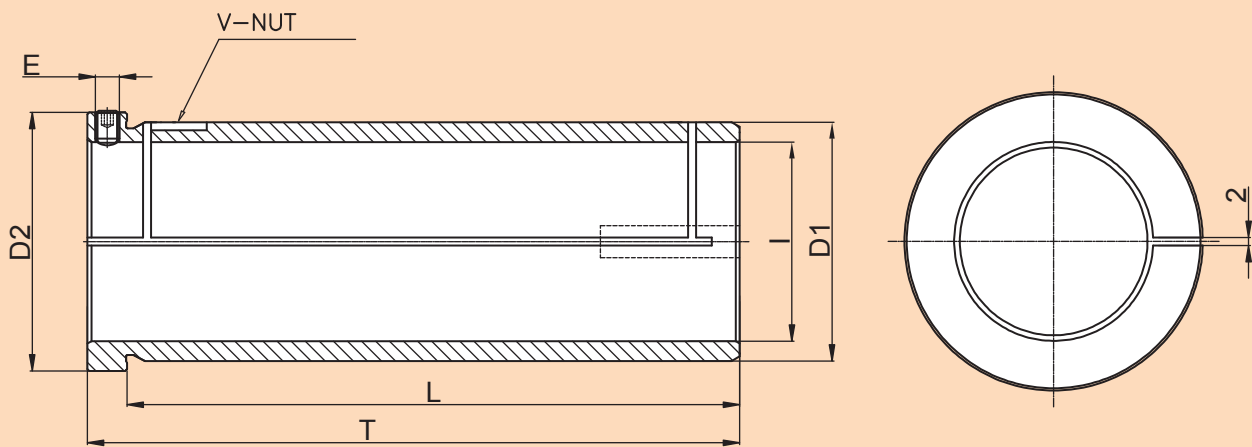
• Made out of En47 material & hardening to 54±2 HRC

**NOMENCLATURE FOR ORDER CODE** | REDUCTION SLEEVE - **RS** | SPLIT TYPE - **S** | SUITABLE FOR E1 & E2 VARIETY - **E1E2**  
TOTAL LENGTH - **XX** | TOOL SHANK DIAMETER - **XX** | VDI TOOL HOLDER BORE - **XX**

• Customized design can be supplied upon request. • All dimensions are in mm.



## PU REDUCTION SLEEVES



CODE	D1	I	L	T	D2	E	TYPE	SUITS FOR TOOL HOLDER
PU1S-3225115	32	25	115	125	37	M6	PU1S	PU1S-32-60
PU1S-4032127	40	32	127	137	45	M6	PU1S	
PU1S-5040127	50	40	127	137	55	M6	PU1S	
PU1S-6050154	60	50	154	164	65	M6	PU1S	

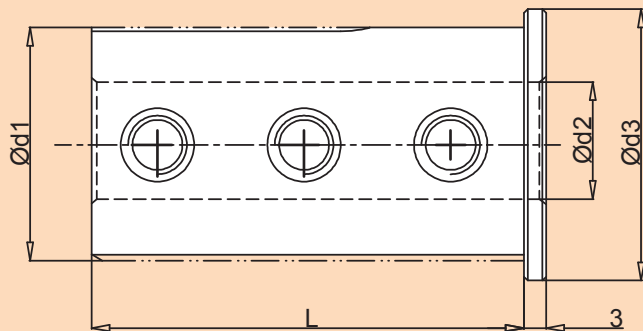
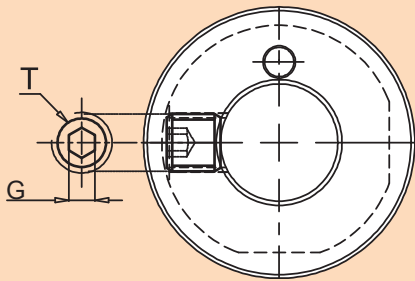
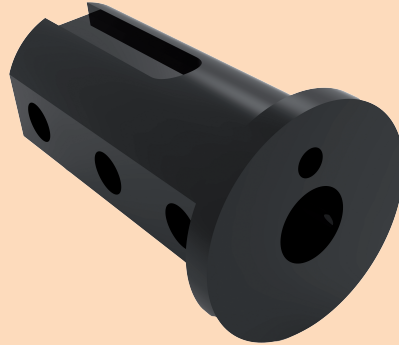
• Made out of En-47 material & hardening to 54±2 HRC

• Customized design can be supplied upon request. • All dimensions are in mm.





**THROUGH COOLANT SLEEVES**

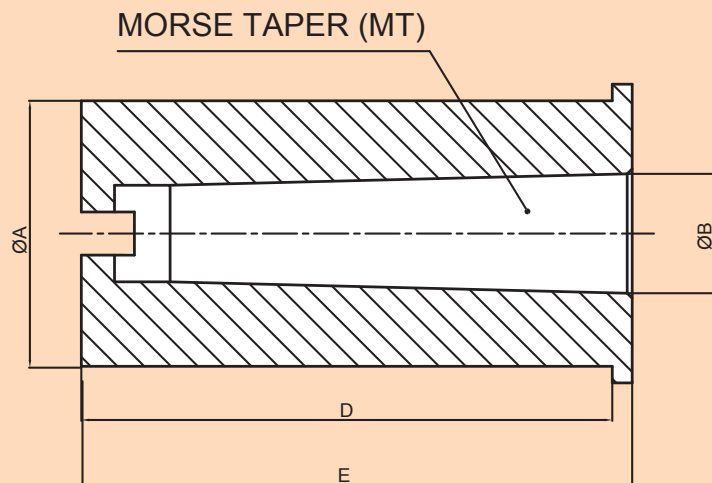
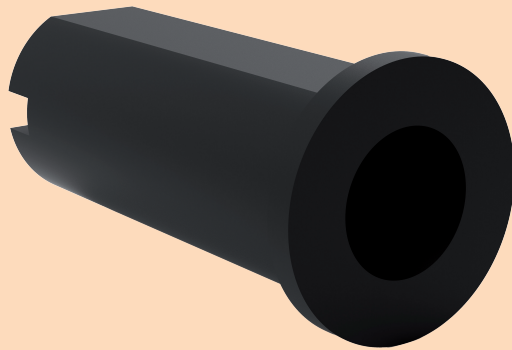


ARTICLE CODE	Ød1	Ød2	Ød3	L	GRUB SCREW T	QTY	G
RSU200839TC	20	08	25	39	M6X5	3	3
RSU250850TC	25	08	30	50	M6X8	3	3
RSU251050TC		10			M8X6	3	4
RSU320859TC	32	08	37	59	M6X10	3	3
RSU321059TC		10			M8X10	3	4
RSU321259TC		12			M8X8	3	4
RSU400869TC	40	08	45	69	M6X12	3	3
RSU401069TC		10			M8X12	3	4
RSU401269TC		12			M8X12	3	4
RSU401669TC		16			M8X10	3	4
RSU500880TC	50	08	55	80	M6X16	3	3
RSU501080TC		10			M8X16	3	4
RSU501280TC		12			M8X16	3	4
RSU501680TC		16			M10X16	3	5
RSU502080TC		20			M10X12	3	5
RSU502580TC		25			M10X12	3	5

- Made out of C45 material & toughen to 20+2 HRC
- Customized design can be supplied upon request. • All dimensions are in mm.



## MORSE TAPER REDUCTION SLEEVES



ITEM NAME	A	B	C	D	TYPE	SUIT FOR TOOL HOLDER	SUIT FOR TOOL DISC
RS2025MT1	25	MT1	58	61	3	BH2025CH18, BH2025CH25	STD50820, STD63820 STD80820, STD80820 HD63820, HD80820 STD801220, HD801220
RS2032MT1	32	MT1	77	80	3	BH2032CH18, BH2032CH25	
RS2032MT2	32	MT2	78	81	3	BH2032CH30, BH2032CH35	
RS2532MT1	32	MT1	77	80	3	BH2532CH30, BH2532CH40	STD80825, STD100825 HD80825, HD100825 HD125825, STD1001225 STD1251225, HD1001225 HD1251225
RS2532MT2	32	MT2	78	81	3		
RS2540MT1	40	MT1	78	81	3	BH2540CH30, BH2540CH40	
RS2540MT2	40	MT2	78	81	3		
RS2540MT3	40	MT3	79	92	3		
RS32/4040MT1	40	MT1	80	83	3	BH3240CH40, BH3240CH50 BH4040CH35	STD100832, STD125832 STD160832, HD125832 STD1251232, STD1601232 HD1251232, STD125840
RS32/4040MT2	40	MT2	80	83	3		
RS32/4040MT3	40	MT3	79	92	3		
RS32/4050MT2	50	MT2	89	92	3	BH3250CH40, BH3250CH50 BH4050CH35	
RS32/4050MT3	50	MT3	89	92	3		
RS32/4050MT4	50	MT4	92	115	3		

• Made out of EN-19 material & toughen to 40+2 HRC

• Customized design can be supplied upon request. • All dimensions are in mm.



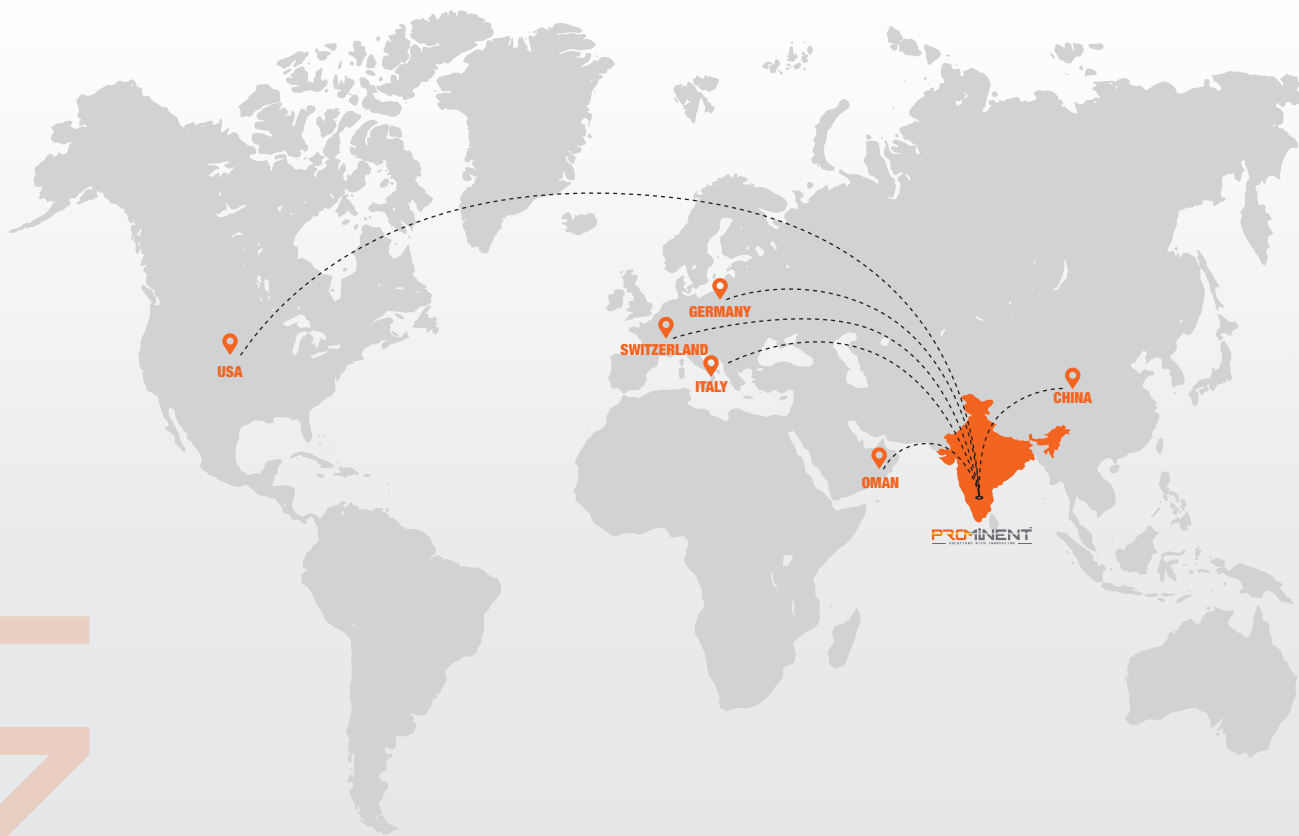




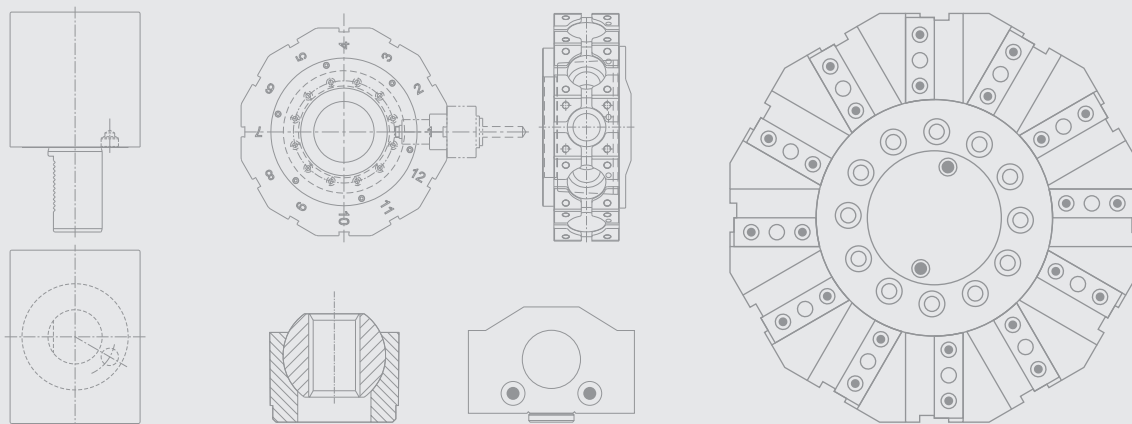
## INFRASTRUCTURE



## Our Global Presence



# PROMINENT



Head Office / Manufacturing Facility

### Prominent Autotech

310×311/4, 8<sup>th</sup> Cross 4<sup>th</sup> Phase Peenya Industrial Area Near NTTF, Bengaluru - 560 058.

✉ info@prominentautotech.com,  
guna@prominentautotech.com

☎ 080 2658 1755 ☎ +91 99167 01312

[www.prominenttools.com](http://www.prominenttools.com)

Manufacturing Extension Unit

### Prominent Machine Tools

60/61, 10<sup>th</sup> Cross, Balaji Nagar Peenya Industrial Area Thigalarapalya, Bengaluru - 560 058.

✉ prominentmachinetools@gmail.com

☎ +91 99167 01312



QR Code For  
GPS Location



QR Code For  
GPS Location